

bsm-2346M**[Primary Antibody]****BioSS**
ANTIBODIES

www.bioss.com.cn

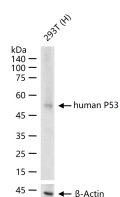
sales@bioss.com.cn

techsupport@bioss.com.cn

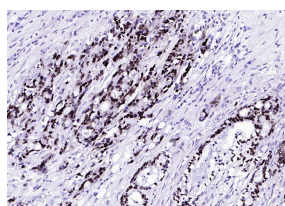
400-901-9800

P53 Mouse mAb**— DATASHEET —**

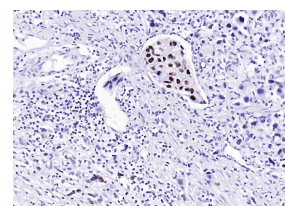
Host: Mouse	Isotype: IgG	Applications: WB (1:500-2000) IHC-P (1:100-500) IHC-F (1:100-500) IF (1:100-500) Reactivity: Human Predicted MW.: 43 kDa Subcellular Location: Cytoplasm ,Nucleus
Clonality: Monoclonal	CloneNo.: D2F7	
GeneID: 7157	SWISS: P04637	
Target: P53		
Immunogen: KLH conjugated synthetic peptide derived from human P53(wt-p53): 341-393/393.		
Purification: affinity purified by Protein A		
Concentration: 1mg/ml		
Storage: Size : 50ul/100ul/200ul 0.01M TBS (pH7.4) with 1% BSA, 0.02% Proclin300 and 50% Glycerol. Size : 200ug (PBS only) 0.01M PBS Shipped at 4°C. Store at -20°C for one year. Avoid repeated freeze/thaw cycles.		
Background: This gene encodes a tumor suppressor protein containing transcriptional activation, DNA binding, and oligomerization domains. The encoded protein responds to diverse cellular stresses to regulate expression of target genes, thereby inducing cell cycle arrest, apoptosis, senescence, DNA repair, or changes in metabolism. Mutations in this gene are associated with a variety of human cancers, including hereditary cancers such as Li-Fraumeni syndrome. Alternative splicing of this gene and the use of alternate promoters result in multiple transcript variants and isoforms. Additional isoforms have also been shown to result from the use of alternate translation initiation codons (PMIDs: 12032546, 20937277). [provided by RefSeq, Feb 2013].		

— VALIDATION IMAGES —

25 ug total protein per lane of various lysates (see on figure) probed with human P53 monoclonal antibody, unconjugated (bsm-2346M) at 1:1000 dilution and 4°C overnight incubation. Followed by conjugated secondary antibody incubation at r.t. for 60 min.



Paraformaldehyde-fixed, paraffin embedded Human Rectal Cancer; Antigen retrieval by boiling in sodium citrate buffer (pH6.0) for 15 min; Antibody incubation with P53(wt-p53) (D2F7) Monoclonal Antibody, Unconjugated(bsm-2346M) at 1:200 overnight at 4°C, followed by conjugation to the bs-40296G-HRP and DAB (C-0010) staining.



Paraformaldehyde-fixed, paraffin embedded Human Gastric Cancer; Antigen retrieval by boiling in sodium citrate buffer (pH6.0) for 15 min; Antibody incubation with P53(wt-p53) (D2F7) Monoclonal Antibody, Unconjugated(bsm-2346M) at 1:200 overnight at 4°C, followed by conjugation to the bs-40296G-HRP and DAB (C-0010) staining.

— SELECTED CITATIONS —

- **[IF=9.995]** Zixin Zhou. et al. CX3CR1hi macrophages sustain metabolic adaptation by relieving adipose-derived stem cell senescence in visceral adipose tissue. CELL REP. 2023 May;42:112424 WB ;Mouse. 37086405
- **[IF=5.08]** Wang, Juan, et al. "Sterigmatocystin induces G1 arrest in primary human esophageal epithelial cells but induces G2 arrest in immortalized cells: key mechanistic differences in these two models." Archives of Toxicology (2014): 1-11. WB ;="Human". 25294323

Important Note: This product as supplied is intended for research use only, not for use in human, therapeutic or diagnostic applications.

- **[IF=1.559]** Zhou et al. miR612 is associated with esophageal squamous cell carcinoma development and metastasis, mediated through TP53. (2017) Mol.Med.Re. 16:1855-1863 WB ;Human. 28656264