

bs-2345R**[Primary Antibody]****Bioss**
ANTIBODIES

www.bioss.com.cn

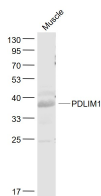
sales@bioss.com.cn

techsupport@bioss.com.cn

400-901-9800

PDLIM1 Rabbit pAb**— DATASHEET —**

Host: Rabbit	Isotype: IgG	Applications: WB (1:500-2000)
Clonality: Polyclonal		
GeneID: 9124	SWISS: O00151	
Target: PDLIM1		
Immunogen: KLH conjugated synthetic peptide derived from human PDLIM1: 251-329/329.		
Purification: affinity purified by Protein A		
Concentration: 1mg/ml		
Storage: 0.01M TBS (pH7.4) with 1% BSA, 0.02% Proclin300 and 50% Glycerol. Shipped at 4°C. Store at -20°C for one year. Avoid repeated freeze/thaw cycles.		Reactivity: Mouse (predicted: Human, Rat, Rabbit, Pig, Cow, Chicken, Dog)
Background: PDLIM1 is a cytoskeletal protein that may act as an adapter that brings other proteins to the cytoskeleton. PDLIM1 is strongly expressed in the heart and skeletal muscle, moderately expressed in the spleen, small intestine, colon, placenta, and lung, and minimally expressed in liver, thymus, kidney, prostate and pancreas. It is not found in the brain, testis, ovary, and peripheral blood leukocytes.		Predicted MW.: 36 kDa
		Subcellular Location: Cytoplasm

— VALIDATION IMAGES —

Sample: Muscle (Mouse) Lysate at 40 ug Primary:
Anti- PDLIM1 (bs-2345R) at 1/1000 dilution
Secondary: IRDye800CW Goat Anti-Rabbit IgG at
1/20000 dilution Predicted band size: 36 kD
Observed band size: 36 kD