

bs-3894R**[Primary Antibody]****Bioss**
ANTIBODIES

www.bioss.com.cn

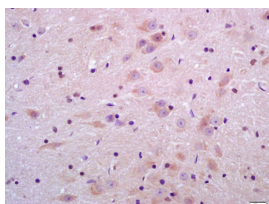
sales@bioss.com.cn

techsupport@bioss.com.cn

400-901-9800

Sulfatase 2 Rabbit pAb**— DATASHEET —**

Host: Rabbit	Isotype: IgG	Applications: IHC-P (1:100-500) IHC-F (1:100-500) IF (1:100-500)
Clonality: Polyclonal		
GeneID: 55959	SWISS: Q8IWU5	
Target: Sulfatase 2		Reactivity: Human, Rat (predicted: Mouse, Rabbit, Pig, Cow, Chicken, Dog)
Immunogen: KLH conjugated synthetic peptide derived from human Sulfatase 2: 651-750/870.		
Purification: affinity purified by Protein A		Predicted MW.: 93 kDa
Concentration: 1mg/ml		Subcellular Location: Extracellular matrix ,Cell membrane ,Cytoplasm
Storage: 0.01M TBS (pH7.4) with 1% BSA, 0.02% Proclin300 and 50% Glycerol. Shipped at 4°C. Store at -20°C for one year. Avoid repeated freeze/thaw cycles.		
Background: Sulfatase 2 exhibits arylsulfatase activity and highly specific endoglucosamine-6-sulfatase activity. It can remove sulfate from the C-6 position of glucosamine within specific subregions of intact heparin. It is expressed at highest levels in the ovary, skeletal muscle, stomach, brain, uterus, heart, kidney and placenta.		

— VALIDATION IMAGES —

Tissue/cell: rat brain tissue; 4% Paraformaldehyde-fixed and paraffin-embedded; Antigen retrieval: citrate buffer (0.01M, pH 6.0), Boiling bathing for 15min; Block endogenous peroxidase by 3% Hydrogen peroxide for 30min; Blocking buffer (normal goat serum, C-0005) at 37°C for 20 min; Incubation: Anti-Sulfatase 2 Polyclonal Antibody, Unconjugated(bs-3894R) 1:200, overnight at 4°C, followed by conjugation to the secondary antibody(SP-0023) and DAB(C-0010) staining