

bs-24390R

[Primary Antibody]

PLRP1 Rabbit pAb

Bioss
ANTIBODIES

www.bioss.com.cn

sales@bioss.com.cn

techsupport@bioss.com.cn

400-901-9800

— DATASHEET —

Host: Rabbit

Isotype: IgG

Applications: WB (1:500-2000)

Clonality: Polyclonal

Reactivity: Mouse, Rat
(predicted: Human)

Target: PLRP1

Immunogen: KLH conjugated synthetic peptide derived from mouse PLRP1: 1-100/473.

Concentration: 1mg/ml

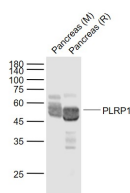
Storage: 0.01M TBS (pH7.4) with 1% BSA, 0.02% Proclin300 and 50% Glycerol.
Shipped at 4°C. Store at -20°C for one year. Avoid repeated freeze/thaw cycles.

Predicted MW.: 50 kDa

Subcellular Location: Secreted

Background: PNLIPRP1 belongs to the AB hydrolase superfamily, Lipase family and contains one PLAT domain. PNLIPRP1 has a catalytic activity of: Triacylglycerol + H₂O = diacylglycerol + a carboxylate. It is expressed in the pancreas and there are three named isoforms.

— VALIDATION IMAGES —



Sample: Lane 1: Pancreas (Mouse) Lysate at 40 ug
Lane 2: Pancreas (Rat) Lysate at 40 ug
Primary: Anti-PLRP1 (bs-24390R) at 1/1000 dilution
Secondary: IRDye800CW Goat Anti-Rabbit IgG at 1/20000 dilution
Predicted band size: 53 kD
Observed band size: 53 kD