

bs-3872R**[Primary Antibody]****GATA1 Rabbit pAb****Bioss**
ANTIBODIES

www.bioss.com.cn

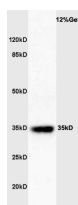
sales@bioss.com.cn

techsupport@bioss.com.cn

400-901-9800

— DATASHEET —

Host: Rabbit	Isotype: IgG	Applications: WB (1:500-2000)
Clonality: Polyclonal		Reactivity: Mouse (predicted: Human, Rat, Rabbit, Pig, Cow, Dog, Horse)
GeneID: 2623	SWISS: P15976	Predicted MW.: 45 kDa
Target: GATA1		Subcellular Location: Nucleus
Immunogen: KLH conjugated synthetic peptide derived from human GATA1: /251-350/413.		
Purification: affinity purified by Protein A		
Concentration: 1mg/ml		
Storage: 0.01M TBS (pH7.4) with 1% BSA, 0.02% Proclin300 and 50% Glycerol. Shipped at 4°C. Store at -20°C for one year. Avoid repeated freeze/thaw cycles.		
Background: GATA1 (Globin transcription factor 1) is a Cys2/Cys2 zinc finger DNA binding protein that is expressed primarily in erythroid, megakaryocytic, mast cells and eosinophilic cells. It belongs to the GATA family of transcription factors. GATA1 is a transcriptional activator which probably serves as a general switch factor for erythroid development. It binds to DNA sites with the consensus sequence [AT]GATA[AG] within regulatory regions of globin genes and of other genes expressed in erythroid cells. The protein also plays an important role in erythroid development by regulating the switch from fetal hemoglobin production to adult hemoglobin.		

— VALIDATION IMAGES —

Sample: Spleen (Mouse) Lysate at 40 ug Primary:
Anti-GATA1 (bs-3872R) at 1/300 dilution
Secondary: HRP conjugated Goat-Anti-rabbit IgG
(bs-0295G-HRP) at 1/5000 dilution Predicted
band size: 45 kD Observed band size: 35 kD