

## BCAS3 Rabbit pAb

Catalog Number: bs-6605R

Target Protein: BCAS3

Concentration: 1mg/ml

Form: Liquid

Host: Rabbit

Clonality: Polyclonal

Isotype: IgG

Applications: WB (1:500-2000)

Reactivity: Human (predicted: Mouse, Rat, Rabbit, Pig, Cow, Chicken, Dog, Horse)

Predicted MW: 101 kDa

Entrez Gene: 54828

Swiss Prot: Q9H6U6

Source: KLH conjugated synthetic peptide derived from human BCAS3: 241-340/928.

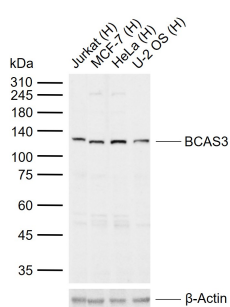
Purification: affinity purified by Protein A

Storage: 0.01M TBS (pH7.4) with 1% BSA, 0.02% Proclin300 and 50% Glycerol.

Shipped at 4°C. Store at -20°C for one year. Avoid repeated freeze/thaw cycles.

**Background:** Expressed in stomach, liver, lung, kidney, prostate, testis, thyroid gland, adrenal gland, brain, heart, skeletal muscle, colon, spleen, small intestine, placenta, blood leukocyte and mammary epithelial cells. Overexpressed in most breast cancer cell lines.

### VALIDATION IMAGES



Sample: Lane 1: Human Jurkat cell lysates Lane 2: Human MCF-7 cell lysates Lane 3: Human HeLa cell lysates Lane 4: Human U-2 OS cell lysates Primary: Anti-BCAS3 (bs-6605R) at 1/1000 dilution Secondary: IRDye800CW Goat Anti-Rabbit IgG at 1/20000 dilution Predicted band size: 101 kDa Observed band size: 120 kDa