

---

## ASC/TMS1 Rabbit pAb

Catalog Number: bs-34024R

Target Protein: ASC/TMS1

Concentration: 1mg/ml

Form: Liquid

Host: Rabbit

Clonality: Polyclonal

Isotype: IgG

Applications: WB (1:500-2000)

Reactivity: Human

Predicted MW: 15/19/21 kDa

Subcellular Cytoplasm ,Nucleus

Locations:

Entrez Gene: 29108

Swiss Prot: Q9ULZ3

Source: Recombinant human ASC: 50-195.

Purification: affinity purified by Protein A

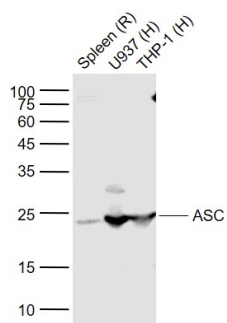
Storage: 0.01M TBS (pH7.4) with 1% BSA, 0.02% Proclin300 and 50% Glycerol.

Shipped at 4°C. Store at -20°C for one year. Avoid repeated freeze/thaw cycles.

**Background:** Promotes caspase-mediated apoptosis. This proapoptotic activity is mediated predominantly through the activation of caspase-9. May be a component of the inflammasome, a protein complex which also includes NALP2, CARD8 and CASP1 and whose function would be the activation of proinflammatory caspases. Tissue specificity: Widely expressed at low levels. Detected in peripheral blood leukocytes, lung, small intestine, spleen, thymus, colon and at lower levels in placenta, liver and kidney. Very low expression in skeletal muscle, heart and brain. Detected in the leukemia cell lines HL-60 and U937, but not in Jurkat T-cell lymphoma and Daudi Burkitt's lymphoma.

### VALIDATION IMAGES

---



Sample: Lane 1: Spleen (Rat) Lysate at 40 ug Lane 2: U937 (Human) Cell Lysate at 30 ug Lane 3: THP-1 (Human) Cell Lysate at 30 ug Primary: Anti-ASC (bs-34024R) at 1/1000 dilution Secondary: IRDye800CW Goat Anti-Rabbit IgG at 1/20000 dilution Predicted band size: 26 kD Observed band size: 24 kD

## PRODUCT SPECIFIC PUBLICATIONS

**[IF=14.026]** Congcong Chen. et al. Radix Paeoniae Alba attenuates Radix Bupleuri-induced hepatotoxicity by modulating gut microbiota to alleviate the inhibition of saikosaponins on glutathione synthetase. J PHARM ANAL. 2023 Apr;; WB ; Rat . 10.1016/j.jpha.2023.04.016

**[IF=4.4]** Suzhi Zhao. et al. GATA1-activated lncRNA OIP5-AS1 and GAS5 promote pyroptosis to exacerbate asthma through regulating miR-136-5p/LIFR axis. FASEB J. 2024 Nov;38(22):e70159 WB ; Human . 39535503