

**bs-8624R****[ Primary Antibody ]**

www.bioss.com.cn

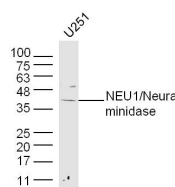
sales@bioss.com.cn

techsupport@bioss.com.cn

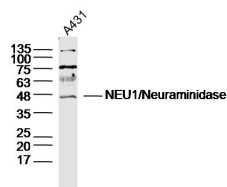
400-901-9800

**NEU1/Neuraminidase Rabbit pAb****— DATASHEET —**

<b>Host:</b> Rabbit <b>Clonality:</b> Polyclonal <b>GeneID:</b> 4758 <b>Target:</b> NEU1/Neuraminidase <b>Immunogen:</b> KLH conjugated synthetic peptide derived from human NEU1/Neuraminidase: 151-250/415. <b>Purification:</b> affinity purified by Protein A <b>Concentration:</b> 1mg/ml <b>Storage:</b> 0.01M TBS (pH7.4) with 1% BSA, 0.02% Proclin300 and 50% Glycerol. Shipped at 4°C. Store at -20°C for one year. Avoid repeated freeze/thaw cycles. <b>Background:</b> The protein encoded by this gene is a lysosomal enzyme that cleaves terminal sialic acid residues from substrates such as glycoproteins and glycolipids. In the lysosome, this enzyme is part of a heterotrimeric complex together with beta-galactosidase and cathepsin A (the latter is also referred to as 'protective protein'). Mutations in this gene can lead to sialidosis, a lysosomal storage disease that can be type 1 (cherry red spot-myoclonus syndrome or normosomatic type), which is late-onset, or type 2 (the dysmorphic type), which occurs at an earlier age with increased severity. [provided by RefSeq, Jul 2008]	<b>Isotype:</b> IgG <b>SWISS:</b> Q99519 <b>Applications:</b> WB (1:500-2000)  <b>Reactivity:</b> Human (predicted: Rat, Cow)  <b>Predicted MW.:</b> 45 kDa  <b>Subcellular Location:</b> Cell membrane ,Cytoplasm
---	--

**— VALIDATION IMAGES —**

Sample:U251 (human)cell Lysate at 40 ug  
 Primary: Anti-NEU1/Neuraminidase(bs-8624R)at 1/300 dilution Secondary: IRDye800CW Goat Anti-RabbitIgG at 1/20000 dilution Predicted band size: 45kD Observed band size: 45kD



Sample: A431 Cell (Human) Lysate at 40 ug  
 Primary: Anti-NEU1/Neuraminidase (bs-8624R)at 1/300 dilution Secondary: IRDye800CW Goat Anti-Rabbit IgG at 1/20000 dilution Predicted band size: 45kD Observed band size: 45kD