

**bs-5187R****[ Primary Antibody ]****phospho-AQP2 (Ser269) Rabbit pAb****BioSS**  
**ANTIBODIES**

www.bioss.com.cn

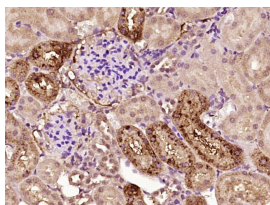
sales@bioss.com.cn

techsupport@bioss.com.cn

400-901-9800

**— DATASHEET —**

<b>Host:</b> Rabbit <b>Clonality:</b> Polyclonal <b>GeneID:</b> 11827 <b>Target:</b> AQP2 (Ser269) <b>Immunogen:</b> KLH conjugated Synthesised phosphopeptide derived from mouse AQP2 around the phosphorylation site of Ser269: RG(p-S)KA. < Cytoplasmic > <b>Purification:</b> affinity purified by Protein A <b>Concentration:</b> 1mg/ml <b>Storage:</b> 0.01M TBS (pH7.4) with 1% BSA, 0.02% Proclin300 and 50% Glycerol. Shipped at 4°C. Store at -20°C for one year. Avoid repeated freeze/thaw cycles. <b>Background:</b> This gene encodes a water channel protein located in the kidney collecting tubule. It belongs to the MIP/aquaporin family, some members of which are clustered together on chromosome 12q13. Mutations in this gene have been linked to autosomal dominant, and recessive forms of nephrogenic diabetes insipidus. Belongs to the MIP/aquaporin (TC 1.A.8) family.	<b>Isotype:</b> IgG <b>SWISS:</b> P56402	<b>Applications:</b> <b>IHC-P</b> (1:100-500) <b>IHC-F</b> (1:100-500) <b>IF</b> (1:100-500) <b>Reactivity:</b> Rat (predicted: Mouse, Pig, Cow, Dog) <b>Predicted MW.:</b> 30 kDa <b>Subcellular Location:</b> Cell membrane ,Cytoplasm
--	---	---

**— VALIDATION IMAGES —**

Paraformaldehyde-fixed, paraffin embedded (rat kidney tissue); Antigen retrieval by boiling in sodium citrate buffer (pH6.0) for 15min; Block endogenous peroxidase by 3% hydrogen peroxide for 20 minutes; Blocking buffer (normal goat serum) at 37°C for 30min; Antibody incubation with (AQP2(Ser269)) Polyclonal Antibody, Unconjugated (bs-5187R) at 1:400 overnight at 4°C, followed by operating according to SP Kit(Rabbit) (sp-0023) instructions and DAB staining.