

bs-5155R**[Primary Antibody]****phospho-LSP1 (Ser204) Rabbit pAb****Bioss**
ANTIBODIES

www.bioss.com.cn

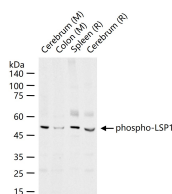
sales@bioss.com.cn

techsupport@bioss.com.cn

400-901-9800

— DATASHEET —

Host: Rabbit	Isotype: IgG	Applications: WB (1:500-2000)
Clonality: Polyclonal		
GeneID: 4046	SWISS: P33241	
Target: phospho-LSP1 (Ser204)		
Immunogen: KLH conjugated Synthesised phosphopeptide derived from human LSP1 around the phosphorylation site of Ser204: TE(p-S)LN.		
Purification: affinity purified by Protein A		Reactivity: Mouse, Rat (predicted: Human, Cow, Chicken, Dog, Horse)
Concentration: 1mg/ml		
Storage: 0.01M TBS (pH7.4) with 1% BSA, 0.02% Proclin300 and 50% Glycerol. Shipped at 4°C. Store at -20°C for one year. Avoid repeated freeze/thaw cycles.		
Background: May play a role in mediating neutrophil activation and chemotaxis.		
		Predicted MW.: 37 kDa
		Subcellular Location: Cell membrane ,Cytoplasm

— VALIDATION IMAGES —

25 ug total protein per lane of various lysates (see on figure) probed with phospho-LSP1 (Ser204) polyclonal antibody, unconjugated (bs-5155R) at 1:1000 dilution and 4°C overnight incubation. Followed by conjugated secondary antibody incubation at r.t. for 60 min.