

bs-5154R**[Primary Antibody]****LSP1 Rabbit pAb****BioSS**
ANTIBODIES

www.bioss.com.cn

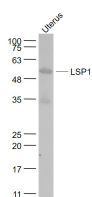
sales@bioss.com.cn

techsupport@bioss.com.cn

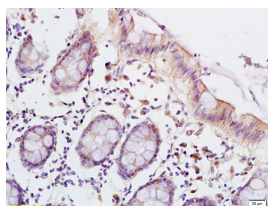
400-901-9800

— DATASHEET —

Host: Rabbit	Isotype: IgG	Applications: WB (1:500-2000) IHC-P (1:100-500) IHC-F (1:100-500) IF (1:100-500) Reactivity: Human, Mouse (predicted: Rat, Dog) Predicted MW.: 37 kDa Subcellular Location: Cell membrane ,Cytoplasm
Clonality: Polyclonal		
GeneID: 4046	SWISS: P33241	
Target: LSP1		
Immunogen: KLH conjugated synthetic peptide derived from human LSP1: 241-339/339.		
Purification: affinity purified by Protein A		
Concentration: 1mg/ml		
Storage: 0.01M TBS (pH7.4) with 1% BSA, 0.02% Proclin300 and 50% Glycerol. Shipped at 4°C. Store at -20°C for one year. Avoid repeated freeze/thaw cycles.		
Background: May play a role in mediating neutrophil activation and chemotaxis.		

— VALIDATION IMAGES —

Sample: Uterus (Mouse) Lysate at 40 ug Primary:
Anti- LSP1 (bs-5154R) at 1/1000 dilution
Secondary: IRDye800CW Goat Anti-Rabbit IgG at
1/20000 dilution Predicted band size: 37 kD
Observed band size: 54 kD



Tissue/cell: human colon carcinoma; 4%
Paraformaldehyde-fixed and paraffin-
embedded; Antigen retrieval: citrate buffer (0.01M, pH 6.0), Boiling bathing for 15min; Block
endogenous peroxidase by 3% Hydrogen
peroxide for 30min; Blocking buffer (normal goat
serum,C-0005) at 37°C for 20 min; Incubation:
Anti-LSP1 Polyclonal Antibody,
Unconjugated(bs-5154R) 1:200, overnight at 4°C,
followed by conjugation to the secondary
antibody(SP-0023) and DAB(C-0010) staining