

bs-5156R**[Primary Antibody]****phospho-LSP1 (Ser252) Rabbit pAb****BioSS**
ANTIBODIES

www.bioss.com.cn

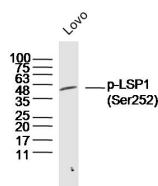
sales@bioss.com.cn

techsupport@bioss.com.cn

400-901-9800

— DATASHEET —

Host: Rabbit	Isotype: IgG	Applications: WB (1:500-2000)
Clonality: Polyclonal		
GeneID: 4046	SWISS: P33241	
Target: phospho-LSP1 (Ser252)		
Immunogen: KLH conjugated Synthesised phosphopeptide derived from human LSP1 around the phosphorylation site of Ser252: QA(P-S)IE.		
Purification: affinity purified by Protein A		Reactivity: Human
Concentration: 1mg/ml		
Storage: 0.01M TBS (pH7.4) with 1% BSA, 0.02% Proclin300 and 50% Glycerol. Shipped at 4°C. Store at -20°C for one year. Avoid repeated freeze/thaw cycles.		Predicted MW.: 37 kDa
Background: May play a role in mediating neutrophil activation and chemotaxis.		Subcellular Location: Cell membrane ,Cytoplasm

— VALIDATION IMAGES —

Sample: Lovo Cell (Human) Lysate at 30 ug
Primary: Anti-p-LSP1(Ser252) (bs-5156R) at 1/300
dilution Secondary: IRDye800CW Goat Anti-
Rabbit IgG at 1/20000 dilution Predicted band
size: 37kD Observed band size: 40kD