

bs-5423R**[Primary Antibody]****PPAP2A Rabbit pAb****Bioss**
ANTIBODIES

www.bioss.com.cn

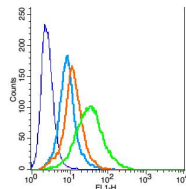
sales@bioss.com.cn

techsupport@bioss.com.cn

400-901-9800

— DATASHEET —

Host: Rabbit	Isotype: IgG	Applications: Flow-Cyt (3µg/Test)
Clonality: Polyclonal		Reactivity: Rat (predicted: Human, Mouse, Rabbit, Sheep, Cow, Dog, Horse)
GeneID: 8611	SWISS: Q14494	
Target: PPAP2A		Predicted MW.: 32 kDa
Immunogen: KLH conjugated synthetic peptide derived from human PPAP2A: 31-130/284. < Extracellular >		Subcellular Location: Cell membrane
Purification: affinity purified by Protein A		
Concentration: 1mg/ml		
Storage: 0.01M TBS (pH7.4) with 1% BSA, 0.02% Proclin300 and 50% Glycerol. Shipped at 4°C. Store at -20°C for one year. Avoid repeated freeze/thaw cycles.		
Background: PPAP2A is a member of the phosphatidic acid phosphatase (PAP) family. PAPs convert phosphatidic acid to diacylglycerol, and function in de novo synthesis of glycerolipids as well as in receptor-activated signal transduction mediated by phospholipase D. This protein is an integral membrane glycoprotein, and has been shown to be a surface enzyme that plays an active role in the hydrolysis and uptake of lipids from extracellular space.		

— VALIDATION IMAGES —

Blank control: H9C2 (blue) Isotype Control
Antibody: Rabbit IgG(orange) ; Secondary
Antibody: Goat anti-rabbit IgG-FITC(white blue),
Dilution: 1:100 in 1 X PBS containing 0.5% BSA ;
Primary Antibody Dilution: 3µl in 100 µL1X PBS
containing 0.5% BSA(green).