

bs-21265R

[Primary Antibody]

SLC35F1 Rabbit pAb

BioSS
ANTIBODIES

www.bioss.com.cn

sales@bioss.com.cn

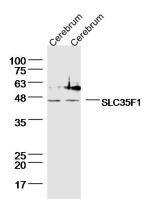
techsupport@bioss.com.cn

400-901-9800

— DATASHEET —

Host: Rabbit	Isotype: IgG	Applications: WB (1:500-2000)
Clonality: Polyclonal		
GeneID: 222553	SWISS: Q5T1Q4	Reactivity: Mouse, Rat (predicted: Human, Rabbit, Pig, Sheep, Cow, Dog, Horse)
Target: SLC35F1		Predicted MW.: 45 kDa
Immunogen: KLH conjugated synthetic peptide derived from human SLC35F1: 301-400/408.		Subcellular Location: Cell membrane
Purification: affinity purified by Protein A		
Concentration: 1mg/ml		
Storage: Preservative: 0.02% Proclin300, Constituents: 1% BSA, 0.01M PBS, pH7.4. Shipped at 4°C. Store at -20°C for one year. Avoid repeated freeze/thaw cycles.		

— VALIDATION IMAGES —



Sample: Cerebrum (Mouse) Lysate at 40 ug
Cerebrum (Rat) Lysate at 40 ug Primary: Anti-
SLC35F1 (bs-21265R) at 1/300 dilution
Secondary: IRDye800CW Goat Anti-Rabbit IgG at
1/20000 dilution Predicted band size: 45 kD
Observed band size: 45 kD