

**bs-2379R****[ Primary Antibody ]****Bioss**  
**ANTIBODIES**

www.bioss.com.cn

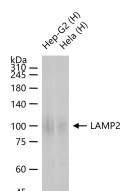
sales@bioss.com.cn

techsupport@bioss.com.cn

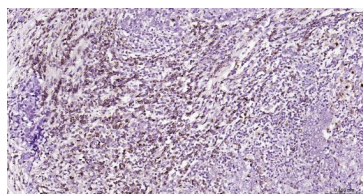
400-901-9800

**LAMP2 Rabbit pAb****— DATASHEET —**

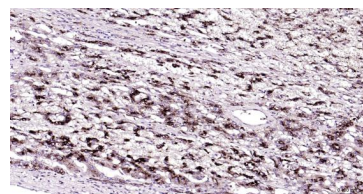
<b>Host:</b> Rabbit <b>Clonality:</b> Polyclonal <b>GeneID:</b> 3920 <b>Target:</b> LAMP2 <b>Immunogen:</b> KLH conjugated synthetic peptide derived from human LAMP2: 301-411/411. <b>Purification:</b> affinity purified by Protein A <b>Concentration:</b> 1mg/ml <b>Storage:</b> 0.01M TBS (pH7.4) with 1% BSA, 0.02% Proclin300 and 50% Glycerol. Shipped at 4°C. Store at -20°C for one year. Avoid repeated freeze/thaw cycles. <b>Background:</b> The protein encoded by the LAMP2 gene is a member of a family of membrane glycoproteins. This glycoprotein provides selectins with carbohydrate ligands and is thought to play a role in tumor cell metastasis. It may also function in the protection, maintenance, and adhesion of the lysosome. Alternative splicing of the gene produces two known products, LAMP2a and LAMP2b. Isoform LAMP2a is highly expressed in placenta, lung and liver and has low expression in brain and skeletal muscle. The isoform detected by this antibody, LAMP2b, is highly expressed in skeletal muscle less so in brain, placental, lung, kidney and pancreas and has very low expression in liver.	<b>Isotype:</b> IgG <b>SWISS:</b> P13473	<b>Applications:</b> <b>WB</b> (1:500-2000) <b>IHC-P</b> (1:50-200) <b>IHC-F</b> (1:50-200) <b>IF</b> (1:50-200) <b>Flow-Cyt</b> (1:20-50) <b>ICC/IF</b> (1:50-200) <b>IP</b> (1:20-50) <b>Reactivity:</b> Human, Mouse, Rat <b>Predicted MW.:</b> 45 kDa <b>Subcellular Location:</b> Cell membrane ,Cytoplasm
---	---	--

**— VALIDATION IMAGES —**

25 ug total protein per lane of various lysates (see on figure) probed with LAMP2 polyclonal antibody, unconjugated (bs-2379R) at 1:1000 dilution and 4°C overnight incubation. Followed by conjugated secondary antibody incubation at r.t. for 60 min.



Paraformaldehyde-fixed, paraffin embedded Human Thyroid Cancer; Antigen retrieval by boiling in sodium citrate buffer (pH6.0) for 15 min; Antibody incubation with LAMP2 Polyclonal Antibody, Unconjugated (bs-2379R) at 1:200 overnight at 4°C, followed by conjugation to the bs-0295G-HRP and DAB (C-0010) staining.



Paraformaldehyde-fixed, paraffin embedded Human Liver Cancer; Antigen retrieval by boiling in sodium citrate buffer (pH6.0) for 15 min; Antibody incubation with LAMP2 Polyclonal Antibody, Unconjugated (bs-2379R) at 1:200 overnight at 4°C, followed by conjugation to the bs-0295G-HRP and DAB (C-0010) staining.

**— SELECTED CITATIONS —**

- **[IF=16]** Cui Tang. et al. Multifunctional Nanomedicine for Targeted Atherosclerosis Therapy: Activating Plaque Clearance Cascade and Suppressing Inflammation. ACS NANO. 2025;XXXX(XXX):XXX-XXX IHC,IF ;Mouse. 39812806
- **[IF=14.224]** Ling Liu. et al. Polystyrene micro(nano)plastics damage the organelles of RBL-2H3 cells and promote MOAP-1 to induce apoptosis. J HAZARD MATER. 2022 Sep;438:129550 WB ;Rat. 35999725
- **[IF=9.5]** Cui Tang. et al. CpG-Conjugated Silver Nanoparticles as a Multifunctional Nanomedicine to Promote Macrophage Efferocytosis and Repolarization for Atherosclerosis Therapy. ACS APPL MATER INTER. 2023;XXXX(XXX):XXX-XXX IHC ;Mouse. 37910772

Important Note: This product as supplied is intended for research use only, not for use in human, therapeutic or diagnostic applications.

- **[IF=6.7]** Wenfang Lai. et al. Salidroside facilitates neuroprotective effects in ischemic stroke by promoting axonal sprouting through promoting autophagy. PHYTOMEDICINE. 2024 Nov;;156208 IF, WB ;Rat. 39550919
- **[IF=6.048]** Hao Liu. et al. Quercetin protects against palmitate-induced pancreatic  $\beta$ -cell apoptosis by restoring lysosomal function and autophagic flux. J NUTR BIOCHEM. 2022 May;;109060 WB, IF ;Rat. 35643286