

bs-5176R**[Primary Antibody]****phospho-ASAP1 (Tyr782) Rabbit pAb****BioSS**
ANTIBODIES

www.bioss.com.cn

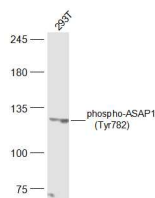
sales@bioss.com.cn

techsupport@bioss.com.cn

400-901-9800

— DATASHEET —

Host: Rabbit	Isotype: IgG	Applications: WB (1:500-2000)
Clonality: Polyclonal		Reactivity: Human (predicted: Mouse, Rat, Pig, Cow, Chicken, Dog, GuineaPig, Horse)
Target: ASAP1 (Tyr782)	SWISS: Q9QWY8	Predicted MW.: 125 kDa
Immunogen: KLH conjugated Synthesised phosphopeptide derived from mouse DDEF1 around the phosphorylation site of Tyr782: LS(p-Y)GA.		Subcellular Location: Cell membrane ,Cytoplasm
Purification: affinity purified by Protein A		
Concentration: 1mg/ml		
Storage: 0.01M TBS (pH7.4) with 1% BSA, 0.02% Proclin300 and 50% Glycerol. Shipped at 4°C. Store at -20°C for one year. Avoid repeated freeze/thaw cycles.		
Background: This gene encodes an ADP-ribosylation factor (ARF) GTPase-activating protein. The GTPase-activating activity is stimulated by phosphatidylinositol 4,5-biphosphate (PIP2), and is greater towards ARF1 and ARF5, and lesser for ARF6. This gene maybe involved in regulation of membrane trafficking and cytoskeleton remodeling. Alternatively spliced transcript variants encoding different isoforms have been found for this gene. [provided by RefSeq, Oct 2011]		

— VALIDATION IMAGES —

Sample: 293T(Human) Cell Lysate at 40 ug
Primary: Anti-phospho-ASAP1 (Tyr782)
(bs-5176R) at 1/300 dilution Secondary:
IRDye800CW Goat Anti-Rabbit IgG at 1/20000
dilution Predicted band size: 125 kD Observed
band size: 125 kD