

bs-5168R**[Primary Antibody]**

phospho-Amyloid Precursor Protein (Ser730) Rabbit pAb

Bioss
ANTIBODIES

www.bioss.com.cn

sales@bioss.com.cn

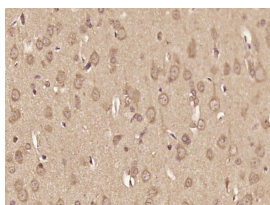
techsupport@bioss.com.cn

400-901-9800

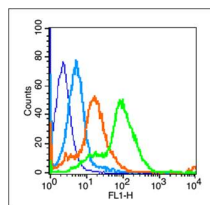
— DATASHEET —

| | | |
|--|----------------------|--|
| Host: Rabbit | Isotype: IgG | Applications: IHC-P (1:100-500) |
| Clonality: Polyclonal | | IHC-F (1:100-500) |
| GeneID: 351 | SWISS: P05067 | IF (1:100-500) |
| Target: phospho-Amyloid Precursor Protein (Ser730) | | Flow-Cyt (1µg/Test) |
| Immunogen: KLH conjugated Synthesised phosphopeptide derived from human APP770 around the phosphorylation site of Ser730: YT(p-S)IH. | | Reactivity: Mouse, Rat (predicted: Human, Rabbit, Pig, Cow, Chicken, Dog, Horse) |
| Purification: affinity purified by Protein A | | Predicted MW.: 3.4-9/83 kDa |
| Concentration: 1mg/ml | | Subcellular Location: Cell membrane |
| Storage: 0.01M TBS (pH7.4) with 1% BSA, 0.02% Proclin300 and 50% Glycerol. Shipped at 4°C. Store at -20°C for one year. Avoid repeated freeze/thaw cycles. | | |
| Background: The cerebral and vascular plaques associated with Alzheimer's disease are mainly composed of Amyloid beta peptides. beta Amyloid is derived from cleavage of the Amyloid precursor protein and varies in length from 39 to 43 amino acids. beta Amyloid [1-40], beta Amyloid [1-42], and beta Amyloid [1-43] peptides result from cleavage of Amyloid precursor protein after residues 40, 42, and 43, respectively. The cleavage takes place by gamma-secretase during the last Amyloid precursor protein processing step. beta Amyloid [1-40], beta Amyloid [1-42], and beta Amyloid [1-43] peptides are major constituents of the plaques and tangles that occur in Alzheimer's disease. beta Amyloid antibodies and peptides have been developed as tools for elucidating the biology of Alzheimer's disease. | | |

— VALIDATION IMAGES —



Paraformaldehyde-fixed, paraffin embedded (rat brain tissue); Antigen retrieval by boiling in sodium citrate buffer (pH6.0) for 15min; Block endogenous peroxidase by 3% hydrogen peroxide for 20 minutes; Blocking buffer (normal goat serum) at 37°C for 30min; Antibody incubation with (APP (Phospho-Ser730)) Polyclonal Antibody, Unconjugated (bs-5168R) at 1:400 overnight at 4°C, followed by operating according to SP Kit(Rabbit) (sp-0023) instructions and DAB staining.



Blank control (blue line): Mouse Spleen cells (fixed with 70% methanol (Overnight at 4°C) and then permeabilized with 0.1% Tween for 20 min at room temperature). Primary Antibody (green line): Rabbit Anti-phospho-Amyloid Precursor Protein (Ser730) antibody (bs-5168R), Dilution: 1µg /10⁶ cells; Isotype Control Antibody (orange line): Rabbit IgG . Secondary Antibody (white blue line): Goat anti-rabbit IgG-FITC, Dilution: 1µg /test.