

bs-5173R**[Primary Antibody]****phospho-APC1 (Ser355) Rabbit pAb****BioSS**
ANTIBODIES

www.bioss.com.cn

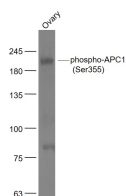
sales@bioss.com.cn

techsupport@bioss.com.cn

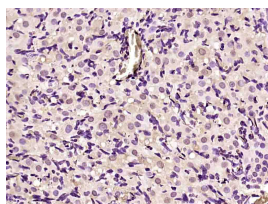
400-901-9800

— DATASHEET —

| | | |
|--|----------------------|--|
| Host: Rabbit | Isotype: IgG | Applications: WB (1:500-2000) |
| Clonality: Polyclonal | | IHC-P (1:100-500) |
| GeneID: 64682 | SWISS: Q9H1A4 | IHC-F (1:100-500) |
| Target: phospho-APC1 (Ser355) | | IF (1:100-500) |
| Immunogen: KLH conjugated Synthesised phosphopeptide derived from human ANAPC1 around the phosphorylation site of Ser355: AH(p-S)PA. | | Reactivity: Mouse, Rat (predicted: Human, Rabbit, Pig, Sheep, Cow, Dog, Horse) |
| Purification: affinity purified by Protein A | | Predicted MW.: 212 kDa |
| Concentration: 1mg/ml | | Subcellular Location: Cytoplasm ,Nucleus |
| Storage: 0.01M TBS (pH7.4) with 1% BSA, 0.02% Proclin300 and 50% Glycerol. Shipped at 4°C. Store at -20°C for one year. Avoid repeated freeze/thaw cycles. | | |
| Background: This gene encodes a subunit of the anaphase-promoting complex. This complex is an E3 ubiquitin ligase that regulates progression through the metaphase to anaphase portion of the cell cycle by ubiquitinating proteins which targets them for degradation. [provided by RefSeq, Dec 2011]. | | |

— VALIDATION IMAGES —

Sample: Ovary (Mouse) Lysate at 40 ug Primary: Anti- phospho-APC1 (Ser355) (bs-5173R) at 1/1000 dilution Secondary: IRDye800CW Goat Anti-Rabbit IgG at 1/20000 dilution Predicted band size: 212 kD Observed band size: 212 kD



Paraformaldehyde-fixed, paraffin embedded (rat ovary); Antigen retrieval by boiling in sodium citrate buffer (pH6.0) for 15min; Block endogenous peroxidase by 3% hydrogen peroxide for 20 minutes; Blocking buffer (normal goat serum) at 37°C for 30min; Antibody incubation with (phospho-APC1 (Ser355)) Polyclonal Antibody, Unconjugated (bs-5173R) at 1:200 overnight at 4°C, followed by operating according to SP Kit(Rabbit) (sp-0023) instructions and DAB staining.