

bs-3956R**[Primary Antibody]****NDUFA1 Rabbit pAb****BioSS**
ANTIBODIES

www.bioss.com.cn

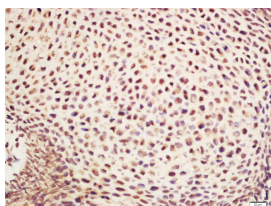
sales@bioss.com.cn

techsupport@bioss.com.cn

400-901-9800

— DATASHEET —

Host: Rabbit	Isotype: IgG	Applications: IHC-P (1:100-500) IHC-F (1:100-500) IF (1:100-500)
Clonality: Polyclonal		
GeneID: 4694	SWISS: O15239	
Target: NDUFA1		Reactivity: Mouse (predicted: Human, Rat, Dog, Horse)
Immunogen: KLH conjugated synthetic peptide derived from human NDUFA1: 31-70/70.		
Purification: affinity purified by Protein A		Predicted MW.: 8 kDa
Concentration: 1mg/ml		Subcellular Location: Cell membrane ,Cytoplasm
Storage: 0.01M TBS (pH7.4) with 1% BSA, 0.02% Proclin300 and 50% Glycerol. Shipped at 4°C. Store at -20°C for one year. Avoid repeated freeze/thaw cycles.		
Background: NDUFA1 (NADH dehydrogenase (ubiquinone) 1 alpha subcomplex, 1) is an essential component of the multisubunit NADH ubiquinone oxidoreductase (complex 1), the first enzyme complex in the mitochondrial respiratory chain. Complex I transfers electrons from NADH to the respiratory chain via ubiquinone.		

— VALIDATION IMAGES —

Tissue/cell: mouse embryo tissue 4%
Paraformaldehyde-fixed and paraffin-
embedded; Antigen retrieval: citrate buffer (0.01M, pH 6.0), Boiling bathing for 15min; Block endogenous peroxidase by 3% Hydrogen peroxide for 30min; Blocking buffer (normal goat serum, C-0005) at 37°C for 20 min; Incubation: Anti-NDUFA1 Polyclonal Antibody, Unconjugated(bs-3956R) 1:200, overnight at 4°C, followed by conjugation to the secondary antibody(SP-0023) and DAB(C-0010) staining