

**bs-3951R****[ Primary Antibody ]****Cytochrome B Rabbit pAb****Bioss**  
**ANTIBODIES**

www.bioss.com.cn

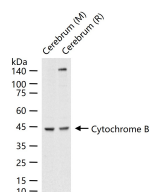
sales@bioss.com.cn

techsupport@bioss.com.cn

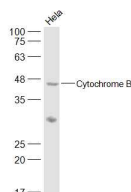
400-901-9800

**— DATASHEET —**

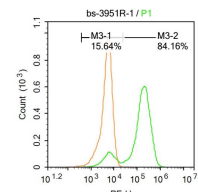
<b>Host:</b> Rabbit	<b>Isotype:</b> IgG	<b>Applications:</b> WB (1:500-2000) <b>Flow-Cyt</b> (1ug/test)
<b>Clonality:</b> Polyclonal		<b>Reactivity:</b> Human, Mouse, Rat (predicted: Pig)
<b>GeneID:</b> 4519	<b>SWISS:</b> P00156	
<b>Target:</b> Cytochrome B		
<b>Immunogen:</b> KLH conjugated synthetic peptide derived from human Cytochrome B: 101-200/388.		
<b>Purification:</b> affinity purified by Protein A		
<b>Concentration:</b> 1mg/ml		<b>Predicted MW.:</b> 43 kDa
<b>Storage:</b> 0.01M TBS (pH7.4) with 1% BSA, 0.02% Proclin300 and 50% Glycerol. Shipped at 4°C. Store at -20°C for one year. Avoid repeated freeze/thaw cycles.		<b>Subcellular Location:</b> Cytoplasm ,Nucleus
<b>Background:</b> Cytochrome b belongs to the cytochrome b family. It is a component of the ubiquinol-cytochrome c reductase complex (complex III or cytochrome b-c1 complex), which is a respiratory chain that generates an electrochemical potential coupled to ATP synthesis.		

**— VALIDATION IMAGES —**

25 ug total protein per lane of various lysates (see on figure) probed with Cytochrome B polyclonal antibody, unconjugated (bs-3951R) at 1:1000 dilution and 4°C overnight incubation. Followed by conjugated secondary antibody incubation at r.t. for 60 min.



Sample: HeLa(Human) Cell Lysate at 30 ug  
Primary: Anti-Cytochrome B (bs-3951R) at 1/500 dilution Secondary: IRDye800CW Goat Anti-Rabbit IgG at 1/20000 dilution Predicted band size: 43 kD Observed band size: 43 kD



U-937 cells were fixed with 4% PFA for 10min at room temperature, permeabilized with 90% ice-cold methanol for 20 min at room temperature, and incubated in 5% BSA blocking buffer for 30 min at room temperature. Cells were then stained with Cytochrome B Antibody(bs-3951R) at 1:100 dilution in blocking buffer and incubated for 30 min at room temperature, washed twice with 2%BSA in PBS, followed by secondary antibody incubation for 40 min at room temperature. Acquisitions of 20,000 events were performed. Cells stained with primary antibody (green), and isotype control (orange).

**— SELECTED CITATIONS —**

- **[IF=4]** Huang Bangliang. et al. PSA controls hepatic lipid metabolism by regulating the NRF2 signaling pathway. J Mol Cell Biol. 2021 May;; WB ;Human. 34048566