

bs-24533R

[Primary Antibody]

KLF4 Rabbit pAb

Bioss
ANTIBODIES

www.bioss.com.cn

sales@bioss.com.cn

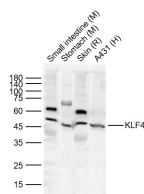
techsupport@bioss.com.cn

400-901-9800

— DATASHEET —

Host: Rabbit	Isotype: IgG	Applications: WB (1:500-2000)
Clonality: Polyclonal		Reactivity: Human, Mouse, Rat (predicted: Pig, Cow, Dog, Horse)
GeneID: 9314	SWISS: O43474	Predicted MW.: 56 kDa
Target: KLF4		Subcellular Location: Nucleus
Immunogen: KLH conjugated synthetic peptide derived from human KLF4: 1-100/513.		
Purification: affinity purified by Protein A		
Concentration: 1mg/ml		
Storage: 0.01M TBS (pH7.4) with 1% BSA, 0.02% Proclin300 and 50% Glycerol. Shipped at 4°C. Store at -20°C for one year. Avoid repeated freeze/thaw cycles.		
Background: KLF4 is a transcription factor that works with Sp1 to activate the Laminin gamma1 chain gene. It binds the CACCC core sequence. KLF4 may be involved in the differentiation of epithelial cells and may also function in the development of the skeleton and kidney. KLF4 also has roles as both an oncogene and a tumor suppressor.		

— VALIDATION IMAGES —



Sample: Lane 1: Mouse Small intestine Lysates
Lane 2: Mouse Stomach Lysates Lane 3: Rat Skin
Lysates Lane 4: Human A431 cell Lysates
Primary: Anti-KLF4 (bs-24533R) at 1/1000
dilution Secondary: IRDye800CW Goat Anti-
Rabbit IgG at 1/20000 dilution Predicted band
size: 56kDa Observed band size: 56kDa