

bs-1453R**[Primary Antibody]****BioSS**
ANTIBODIES

www.bioss.com.cn

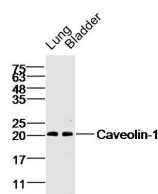
sales@bioss.com.cn

techsupport@bioss.com.cn

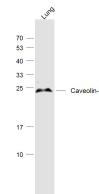
400-901-9800

Caveolin-1 Rabbit pAb**— DATASHEET —**

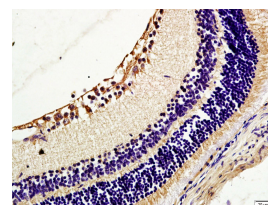
Host: Rabbit	Isotype: IgG	Applications: WB (1:500-2000) IHC-P (1:100-500) IHC-F (1:100-500) IF (1:100-500)
Clonality: Polyclonal		
GeneID: 857	SWISS: Q03135	
Target: Caveolin-1		
Immunogen: KLH conjugated synthetic peptide derived from human Caveolin-1: 2-120/178.		Reactivity: Human, Mouse, Rat (predicted: Rabbit, Pig, Sheep, Cow, Dog, Horse)
Purification: affinity purified by Protein A		
Concentration: 1mg/ml		Predicted MW.: 20 kDa
Storage: 0.01M TBS (pH7.4) with 1% BSA, 0.02% Proclin300 and 50% Glycerol. Shipped at 4°C. Store at -20°C for one year. Avoid repeated freeze/thaw cycles.		Subcellular Location: Cell membrane ,Cytoplasm
Background: The scaffolding protein encoded by this gene is the main component of the caveolae plasma membranes found in most cell types. The protein links integrin subunits to the tyrosine kinase FYN, an initiating step in coupling integrins to the Ras-ERK pathway and promoting cell cycle progression. The gene is a tumor suppressor gene candidate and a negative regulator of the Ras-p42/44 MAP kinase cascade. CAV1 and CAV2 are located next to each other on chromosome 7 and express colocalizing proteins that form a stable hetero-oligomeric complex. By using alternative initiation codons in the same reading frame, two isoforms (alpha and beta) are encoded by a single transcript from this gene. [provided by RefSeq].		

— VALIDATION IMAGES —

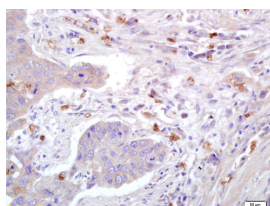
Sample: Lung (Mouse) Lysate at 40 ug Bladder (Mouse) Lysate at 40 ug
 Primary: Anti-Caveolin-1 (bs-1453R) at 1/300 dilution
 Secondary: IRDye800CW Goat Anti-Rabbit IgG at 1/20000 dilution
 Predicted band size: 20 kD Observed band size: 20 kD



Sample: Lung (Mouse) Lysate at 40 ug
 Primary: Anti-Caveolin-1 (bs-1453R) at 1/1000 dilution
 Secondary: IRDye800CW Goat Anti-Rabbit IgG at 1/20000 dilution
 Predicted band size: 20 kD Observed band size: 20 kD



Tissue/cell: mouse retina tissue; 4% Paraformaldehyde-fixed and paraffin-embedded; Antigen retrieval: citrate buffer (0.01M, pH 6.0), Boiling bathing for 15min; Block endogenous peroxidase by 3% Hydrogen peroxide for 30min; Blocking buffer (normal goat serum, C-0005) at 37°C for 20 min; Incubation: Anti-Caveolin-1 Polyclonal Antibody, Unconjugated(bs-1453R) 1:200, overnight at 4°C, followed by conjugation to the secondary antibody(SP-0023) and DAB(C-0010) staining



Tissue/cell: human lung carcinoma; 4% Paraformaldehyde-fixed and paraffin-

Important Note: This product as supplied is intended for research use only, not for use in human, therapeutic or diagnostic applications.

embedded; Antigen retrieval: citrate buffer (0.01M, pH 6.0), Boiling bathing for 15min; Block endogenous peroxidase by 3% Hydrogen peroxide for 30min; Blocking buffer (normal goat serum,C-0005) at 37°C for 20 min; Incubation: Anti-Caveolin-1 Polyclonal Antibody, Unconjugated(bs-1453R) 1:200, overnight at 4°C, followed by conjugation to the secondary antibody(SP-0023) and DAB(C-0010) staining

— SELECTED CITATIONS —

- **[IF=8]** Dixit, Saurabh, et al. "Caveolin-mediated endocytosis of the Chlamydia M278 outer membrane peptide encapsulated in poly (lactic acid)-Poly (ethylene glycol) nanoparticles by mouse primary dendritic cells enhances specific immune effectors mediated by MHC class II and CD4+ T cells." *Biomaterials* (2017). ICC ;="Mouse". 29324305
- **[IF=6.8]** Dongliu Luo. et al. Cannabidiol alleviates perfluorooctane sulfonate-induced macrophage extracellular trap mediate inflammation and fibrosis in mice liver. *ECOTOX ENVIRON SAFE*. 2023 Sep;263:115374 WB ;Mouse,Human. 37591127
- **[IF=7]** Li Yinyan. et al. Cilnidipine exerts antiviral effects in vitro and in vivo by inhibiting the internalization and fusion of influenza A virus. *BMC MED*. 2025 Dec;23(1):1-16 WB ;Human. 40189517
- **[IF=5.818]** Yingna Huang. et al. Nisoldipine Inhibits Influenza A Virus Infection by Interfering with Virus Internalization Process. *VIRUSES-BASEL*. 2022 Dec;14(12):2738 WB ;Human. 36560742
- **[IF=6.205]** Cheng S et al. Comparative analysis of Longissimus dorsi tissue from two sheep groups identifies differentially expressed genes related to growth, development and meat quality. *Genomics*. 2020 Sep;112(5):3322-3330. WB ;Sheep. 32534014