

**bs-8454R****[ Primary Antibody ]****phospho-GluR1 (Ser836) Rabbit pAb****BioSS**  
**ANTIBODIES**

www.bioss.com.cn

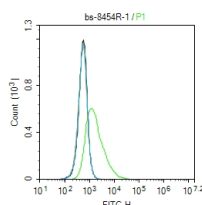
sales@bioss.com.cn

techsupport@bioss.com.cn

400-901-9800

**— DATASHEET —**

<b>Host:</b> Rabbit <b>Clonality:</b> Polyclonal <b>GeneID:</b> 2890 <b>Target:</b> GluR1 (Ser836) <b>Immunogen:</b> KLH conjugated synthesised phosphopeptide derived from human GluR1 around the phosphorylation site of Ser836: SE(p-S)KR. <b>Purification:</b> affinity purified by Protein A <b>Concentration:</b> 1mg/ml <b>Storage:</b> 0.01M TBS (pH7.4) with 1% BSA, 0.02% Proclin300 and 50% Glycerol. Shipped at 4°C. Store at -20°C for one year. Avoid repeated freeze/thaw cycles. <b>Background:</b> Glutamate receptors are the predominant excitatory neurotransmitter receptors in the mammalian brain and are activated in a variety of normal neurophysiologic processes. These receptors are heteromeric protein complexes with multiple subunits, each possessing transmembrane regions, and all arranged to form a ligand-gated ion channel. The classification of glutamate receptors is based on their activation by different pharmacologic agonists. This gene belongs to a family of alpha-amino-3-hydroxy-5-methyl-4-isoxazole propionate (AMPA) receptors. Alternatively spliced transcript variants encoding different isoforms have been found for this gene. [provided by RefSeq, Jul 2008].	<b>Isotype:</b> IgG <b>SWISS:</b> P42261	<b>Applications:</b> Flow-Cyt (1ug/Test) <b>Reactivity:</b> Human (predicted: Mouse, Rat) <b>Predicted MW.:</b> 98 kDa <b>Subcellular Location:</b> Extracellular matrix ,Cell membrane ,Cytoplasm
--	---	---

**— VALIDATION IMAGES —**

Blank control: SH-SY5Y. Primary Antibody (green line): Rabbit Anti-phospho-GluR1 (Ser836) antibody (bs-8454R) Dilution: 1ug/Test; Secondary Antibody : Goat anti-rabbit IgG-FITC Dilution: 0.5ug/Test. Protocol The cells were incubated in 5%BSA to block non-specific protein-protein interactions for 30 min at room temperature .Cells stained with Primary Antibody for 30 min at room temperature. The secondary antibody used for 40 min at room temperature. Acquisition of 20,000 events was performed.