

bs-3955R**[Primary Antibody]****MT-ND6 Rabbit pAb****BioSS**
ANTIBODIES

www.bioss.com.cn

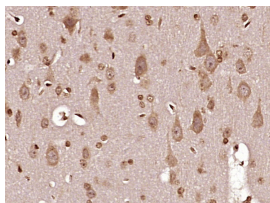
sales@bioss.com.cn

techsupport@bioss.com.cn

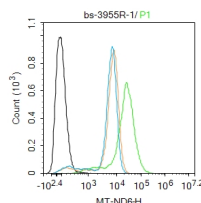
400-901-9800

— DATASHEET —

Host: Rabbit	Isotype: IgG	Applications: IHC-P (1:100-500) IHC-F (1:100-500) IF (1:100-500) Flow-Cyt (1ug/Test) Reactivity: Human, Rat (predicted: Mouse, Sheep, Cow, Dog, Horse) Predicted MW.: 19 kDa Subcellular Location: Cytoplasm
Clonality: Polyclonal		
GeneID: 4541	SWISS: P03923	
Target: MT-ND6		
Immunogen: KLH conjugated synthetic peptide derived from human MTND6: 51-150/174.		
Purification: affinity purified by Protein A		
Concentration: 1mg/ml		
Storage: 0.01M TBS (pH7.4) with 1% BSA, 0.02% Proclin300 and 50% Glycerol. Shipped at 4°C. Store at -20°C for one year. Avoid repeated freeze/thaw cycles.		
Background: NADH Dehydrogenase subunit 6 (MTND6) is 1 of the 7 mitochondrial DNA (mtDNA) encoded subunits (MTND1, MTND2, MTND3, MTND4L, MTND4, MTND5, MTND6) included among the approximately 41 polypeptides of respiratory Complex I. Complex I accepts electrons from NADH, transfers them to ubiquinone (Coenzyme Q10), and uses the energy released to pump protons across the mitochondria inner membrane. MTND6 has been proposed to be a component of the iron-protein fragment.		

— VALIDATION IMAGES —

Paraformaldehyde-fixed, paraffin embedded (rat brain tissue); Antigen retrieval by boiling in sodium citrate buffer (pH6.0) for 15min; Block endogenous peroxidase by 3% hydrogen peroxide for 20 minutes; Blocking buffer (normal goat serum) at 37°C for 30min; Antibody incubation with (MT-ND6) Polyclonal Antibody, Unconjugated (bs-3955R) at 1:400 overnight at 4°C, followed by operating according to SP Kit(Rabbit) (sp-0023) instructions and DAB staining.



Blank control: THP-1. Primary Antibody (green line): Rabbit Anti-MT-ND6 antibody (bs-3955R) Dilution: 1µg /10⁶ cells; Isotype Control Antibody (orange line): Rabbit IgG . Secondary Antibody : Goat anti-rabbit IgG-FITC Dilution: 0.5µg /test. Protocol The cells were fixed with 4% PFA (10min at room temperature) and then permeabilized with 0.1% PBST for 20 min at room temperature. The cells were then incubated in 5%BSA to block non-specific protein-protein interactions for 30 min at room temperature .Cells stained with Primary Antibody for 30 min at room temperature. The secondary antibody used for 40 min at room temperature. Acquisition of 20,000 events was performed.

— SELECTED CITATIONS —

- **[IF=15.84]** Ke Cao. et al. Hypermethylation of Hepatic Mitochondrial ND6 Provokes Systemic Insulin Resistance. 2021 May 02 WB ;Mouse. 34141522
- **[IF=5.2]** Wu, Ji-hong, et al. "Cumulative mtDNA damage and mutations contribute to the progressive loss of RGCs in a rat model of glaucoma." Neurobiology of Disease (2014). WB ;Rat. 25478814

Important Note: This product as supplied is intended for research use only, not for use in human, therapeutic or diagnostic applications.

- **[IF=4.1]** Derya Erisik. et al. Differences and Similarities between Colorectal Cancer Cells and Colorectal Cancer Stem Cells: Molecular Insights and Implications. ACS OMEGA. 2023;XXXX(XXX):XXX-XXX ICC ;Human. 37636966
- **[IF=4.3]** Ruyuan Wang. et al. Mitochonic acid 5 increases boar sperm quality by mitigating mitochondrial dysfunction. FRONT CELL DEV BIOL. 2025 Jun;13:1583951 WB ;Pig. 40589524
- **[IF=3]** Ruyuan Wang. et al. Mitochonic Acid 5 Increases Ram Sperm Quality by Improving Mitochondrial Function during Storage at 4 °C. ANIMALS. 2024 Jan;14(3):368 WB ;Sheep. 10.3390/ani14030368