

bs-3957R**[Primary Antibody]****NDUFA10 Rabbit pAb****BioSS**
ANTIBODIES

www.bioss.com.cn

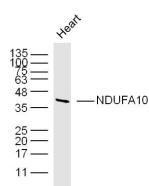
sales@bioss.com.cn

techsupport@bioss.com.cn

400-901-9800

— DATASHEET —

Host: Rabbit	Isotype: IgG	Applications: WB (1:500-2000)
Clonality: Polyclonal		Reactivity: Mouse (predicted: Human, Rat)
GeneID: 4705	SWISS: Q95299	
Target: NDUFA10		Predicted MW.: 36 kDa
Immunogen: KLH conjugated synthetic peptide derived from human NDUFA10: 201-300/355.		Subcellular Location: Cytoplasm
Purification: affinity purified by Protein A		
Concentration: 1mg/ml		
Storage: 0.01M TBS (pH7.4) with 1% BSA, 0.02% Proclin300 and 50% Glycerol. Shipped at 4°C. Store at -20°C for one year. Avoid repeated freeze/thaw cycles.		
Background: NDUFA10 protein belongs to the complex I 42kDa subunit family. Mammalian complex I is the first enzyme complex in the electron transport chain of mitochondria. It is composed of 45 different subunits. This protein is a component of the hydrophobic protein fraction and has NADH dehydrogenase activity and oxidoreductase activity. It transfers electrons from NADH to the respiratory chain.		

— VALIDATION IMAGES —

Sample: Heart (Mouse) Lysate at 40 ug Primary:
Anti-NDUFA10 (bs-3957R) at 1/300 dilution
Secondary: IRDye800CW Goat Anti-Rabbit IgG at
1/20000 dilution Predicted band size: 36 kD
Observed band size: 40 kD

— SELECTED CITATIONS —

- **[IF=7.129]** Wang Yang. et al. Benzo[a]pyrene inhibits testosterone biosynthesis via NDUFA10-mediated mitochondrial compromise in mouse Leydig cells: Integrating experimental and in silico toxicological approaches. ECOTOX ENVIRON SAFE. 2022 Oct;244:114075 WB ;Mouse. 36108438