

**bs-9202R**

**[ Primary Antibody ]**

## IGSF12 Rabbit pAb

**BioSS**  
ANTIBODIES

www.bioss.com.cn

sales@bioss.com.cn

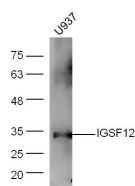
techsupport@bioss.com.cn

400-901-9800

### — DATASHEET —

<b>Host:</b> Rabbit	<b>Isotype:</b> IgG	<b>Applications:</b> WB (1:500-2000)
<b>Clonality:</b> Polyclonal		<b>Reactivity:</b> Human
<b>GeneID:</b> 11314	<b>SWISS:</b> Q9UGN4	
<b>Target:</b> IGSF12		
<b>Immunogen:</b> KLH conjugated synthetic peptide derived from human IGSF12/CD300: 41-140/299. < Extracellular >		<b>Predicted MW.:</b> 31 kDa
<b>Purification:</b> affinity purified by Protein A		<b>Subcellular Location:</b> Cell membrane
<b>Concentration:</b> 1mg/ml		
<b>Storage:</b> 0.01M TBS (pH7.4) with 1% BSA, 0.02% Proclin300 and 50% Glycerol. Shipped at 4°C. Store at -20°C for one year. Avoid repeated freeze/thaw cycles.		
<b>Background:</b> Inhibitory receptor which may contribute to the down-regulation of cytolytic activity in natural killer (NK) cells, and to the down-regulation of mast cell degranulation.		

### — VALIDATION IMAGES —



Sample: U937 Cell (Human) Lysate at 40 ug  
Primary: Anti-IGSF12 (bs-9202R) at 1/300 dilution  
Secondary: IRDye800CW Goat Anti-Rabbit IgG at 1/20000 dilution Predicted band size: 31 kD  
Observed band size: 33 kD