

bs-15583R**[Primary Antibody]****TEM8 Rabbit pAb****Bioss**
ANTIBODIES

www.bioss.com.cn

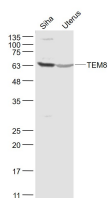
sales@bioss.com.cn

techsupport@bioss.com.cn

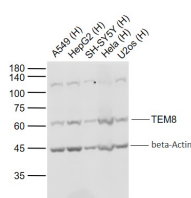
400-901-9800

— DATASHEET —

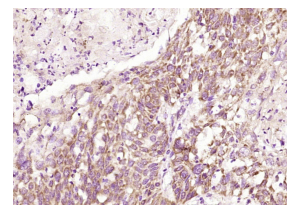
Host: Rabbit	Isotype: IgG	Applications: WB (1:500-2000)
Clonality: Polyclonal		IHC-P (1:100-500)
GeneID: 84168	SWISS: Q9H6X2	IHC-F (1:100-500)
Target: TEM8		IF (1:100-500)
Immunogen: KLH conjugated synthetic peptide derived from human TEM8: 201-300/564. < Extracellular >		Reactivity: Human, Mouse (predicted: Rat, Rabbit)
Purification: affinity purified by Protein A		
Concentration: 1mg/ml		Predicted MW.: 63 kDa
Storage: 0.01M TBS (pH7.4) with 1% BSA, 0.02% Proclin300 and 50% Glycerol. Shipped at 4°C. Store at -20°C for one year. Avoid repeated freeze/thaw cycles.		Subcellular Location: Cell membrane
Background: This gene encodes a type I transmembrane protein and is a tumor-specific endothelial marker that has been implicated in colorectal cancer. The encoded protein has been shown to also be a docking protein or receptor for Bacillus anthracis toxin, the causative agent of the disease, anthrax. The binding of the protective antigen (PA) component, of the tripartite anthrax toxin, to this receptor protein mediates delivery of toxin components to the cytosol of cells. Once inside the cell, the other two components of anthrax toxin, edema factor (EF) and lethal factor (LF) disrupt normal cellular processes. Three alternatively spliced variants that encode different protein isoforms have been described. [provided by RefSeq, Oct 2008]		

— VALIDATION IMAGES —

Sample: SiHa(Human) Cell Lysate at 30 ug Uterus (Mouse) Lysate at 40 ug Primary: Anti- TEM8 (bs-15583R) at 1/1000 dilution Secondary: IRDye800CW Goat Anti-Rabbit IgG at 1/20000 dilution Predicted band size: 59 kD Observed band size: 62 kD



Sample: Lane 1: Human A549 cell lysates Lane 2: Human HepG2 cell lysates Lane 3: Human SH-SY5Y cell lysates Lane 4: Human HeLa cell lysates Lane 5: Human U2os cell lysates Primary: Anti-TEM8 (bs-15583R) at 1/1000 dilution Secondary: IRDye800CW Goat Anti-Rabbit IgG at 1/20000 dilution Predicted band size: 63 kD Observed band size: 61 kD



Paraformaldehyde-fixed, paraffin embedded (Human esophageal cancer); Antigen retrieval by boiling in sodium citrate buffer (pH6.0) for 15min; Block endogenous peroxidase by 3% hydrogen peroxide for 20 minutes; Blocking buffer (normal goat serum) at 37°C for 30min; Antibody incubation with (TEM8) Polyclonal Antibody, Unconjugated (bs-15583R) at 1:200 overnight at 4°C, followed by operating according to SP Kit(Rabbit) (sp-0023) instructions and DAB staining.

— SELECTED CITATIONS —

- **[IF=3.53]** Minmin Wang. et al. Infectious recombinant Senecavirus A expressing novel reporter proteins. 2021 Mar 03 WB ;Human. 33660038
- **[IF=2.19]** Taguchi K et al. Isolation of tumor endothelial cells from murine cancer. (2018)Journal of Immunological Methods. Nov 3. IF ;Mouse. 30395818