

bs-1432R**[Primary Antibody]****CD68 Rabbit pAb****BioSS**
ANTIBODIES

www.bioss.com.cn

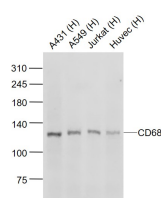
sales@bioss.com.cn

techsupport@bioss.com.cn

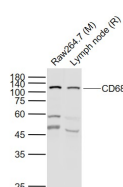
400-901-9800

— DATASHEET —

Host: Rabbit Clonality: Polyclonal GeneID: 968 Target: CD68 Immunogen: KLH conjugated synthetic peptide derived from human CD68: 1-130/354. < Extracellular > Purification: affinity purified by Protein A Concentration: 1mg/ml Storage: 0.01M TBS (pH7.4) with 1% BSA, 0.02% Proclin300 and 50% Glycerol. Shipped at 4°C. Store at -20°C for one year. Avoid repeated freeze/thaw cycles. Background: This gene encodes a 110-kD transmembrane glycoprotein that is highly expressed by human monocytes and tissue macrophages. It is a member of the lysosomal/endosomal-associated membrane glycoprotein (LAMP) family. The protein primarily localizes to lysosomes and endosomes with a smaller fraction circulating to the cell surface. It is a type I integral membrane protein with a heavily glycosylated extracellular domain and binds to tissue- and organ-specific lectins or selectins. The protein is also a member of the scavenger receptor family. Scavenger receptors typically function to clear cellular debris, promote phagocytosis, and mediate the recruitment and activation of macrophages. Alternative splicing results in multiple transcripts encoding different isoforms. [provided by RefSeq, Jul 2008]	Isotype: IgG SWISS: P34810 Applications: WB (1:500-2000) Reactivity: Human, Mouse, Rat Predicted MW.: 37 kDa Subcellular Location: Cell membrane ,Cytoplasm
---	--

— VALIDATION IMAGES —

Sample: Lane 1: A431 (Human) Cell Lysate at 30 ug
Lane 2: A549 (Human) Cell Lysate at 30 ug
Lane 3: Jurkat (Human) Cell Lysate at 30 ug
Lane 4: Huvec (Human) Cell Lysate at 30 ug
Primary: Anti-CD68 (bs-1432R) at 1/500 dilution
Secondary: IRDye800CW Goat Anti-Rabbit IgG at 1/20000 dilution
Predicted band size: 110/185-200 kD
Observed band size: 110 kD



Sample: Lane 1: Raw264.7 (Mouse) Cell Lysate at 30 ug
Lane 2: Lymph node (Rat) Cell Lysate at 30 ug
Primary: Anti-CD68 (bs-1432R) at 1/1000 dilution
Secondary: IRDye800CW Goat Anti-Rabbit IgG at 1/20000 dilution
Predicted band size: 110/185-200 kD
Observed band size: 110 kD

— SELECTED CITATIONS —

- **[IF=8.4]** Yang Hai-Tao. et al. Faecalibacterium prausnitzii as a potential Antiatherosclerotic microbe. CELL COMMUN SIGNAL. 2024 Dec;22(1):1-20 IF ;Mouse. 38243314
- **[IF=6.208]** Yongxin Guo. et al. Beneficial Effects of Oleosomes Fused with Human Fibroblast Growth Factor 1 on Wound Healing via the Promotion of Angiogenesis. INT J MOL SCI. 2022 Jan;23(21):13152 IHC,IF ;Rat. 36361940
- **[IF=5.7]** Jingyi Wang. et al. A Disintegrin and Metalloproteinase 17 Disrupts Bovine Macrophage MER Proto-Oncogene Tyrosine Kinase Integrity to Impede Apoptotic Cell Clearance and Promote Inflammation in Clinical Mastitis. J AGR FOOD

Important Note: This product as supplied is intended for research use only, not for use in human, therapeutic or diagnostic applications.

CHEM. 2024;XXXX(XXX):XXX-XXX WB ;Bovine. 39731564

- **[IF=4.7]** Ziyi Wang. et al. Macrophages Atp6v0d2 regulates XBP1-mediated cholesterol metabolism to suppress metabolic dysfunction-associated steatohepatitis progression. INT IMMUNOPHARMACOL. 2025 Aug;161:115088 IF ;Mouse. 40526981
- **[IF=4.9]** Andrea Grandi. et al. A mouse model of progressive lung fibrosis with cutaneous involvement induced by a combination of oropharyngeal and osmotic minipump bleomycin delivery. AM J PHYSIOL-LUNG C. 2024 Apr;(Articles in Press): IF ;Mouse. 38651940