

**bs-5421R****[ Primary Antibody ]****phospho-Tau (Ser356) Rabbit pAb****Bioss**  
**ANTIBODIES**

www.bioss.com.cn

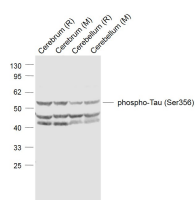
sales@bioss.com.cn

techsupport@bioss.com.cn

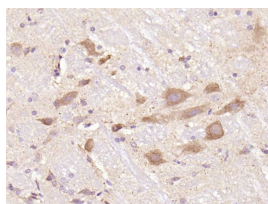
400-901-9800

**— DATASHEET —**

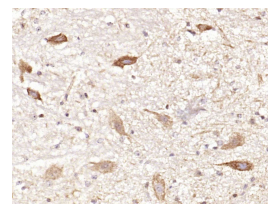
<b>Host:</b> Rabbit <b>Clonality:</b> Polyclonal <b>GeneID:</b> 4137 <b>Target:</b> phospho-Tau (Ser356) <b>Immunogen:</b> KLH conjugated Synthesised phosphopeptide derived from human Tau around the phosphorylation site of Ser356: IG(P-S)L. <b>Purification:</b> affinity purified by Protein A <b>Concentration:</b> 1mg/ml <b>Storage:</b> 0.01M TBS (pH7.4) with 1% BSA, 0.02% Proclin300 and 50% Glycerol. Shipped at 4°C. Store at -20°C for one year. Avoid repeated freeze/thaw cycles. <b>Background:</b> Tau proteins are important Promotes microtubule assembly and stability, and might be involved in the establishment and maintenance of neuronal polarity. The C-terminus binds axonal microtubules while the N-terminus binds neural plasma membrane components, suggesting that tau functions as a linker protein between both. Axonal polarity is predetermined by tau localization (in the neuronal cell) in the domain of the cell body defined by the centrosome. The short isoforms allow plasticity of the cytoskeleton whereas the longer isoforms may preferentially play a role in its stabilization. Tau proteins subcellular located in the axons of neurons, in the cytosol and in association with plasma membrane components. It expressed in neurons. PNS-tau is expressed in the peripheral nervous system while the others are expressed in the central nervous system.	<b>Isotype:</b> IgG <b>SWISS:</b> P10636 <b>Applications:</b> <b>WB</b> (1:500-2000) <b>IHC-P</b> (1:100-500) <b>IHC-F</b> (1:100-500) <b>IF</b> (1:100-500) <b>Reactivity:</b> Human, Mouse, Rat (predicted: Rabbit, Cow, Chicken, Dog, Horse) <b>Predicted MW.:</b> 52/79 kDa <b>Subcellular Location:</b> Cell membrane ,Cytoplasm
--	--

**— VALIDATION IMAGES —**

Sample: Lane 1: Cerebrum (Rat) Lysate at 40 ug  
Lane 2: Cerebrum (Mouse) Lysate at 40 ug Lane 3: Cerebellum (Rat) Lysate at 40 ug Lane 4: Cerebellum (Mouse) Lysate at 40 ug Primary: Anti-phospho-Tau (Ser356) (bs-5421R) at 1/1000 dilution Secondary: IRDye800CW Goat Anti-Rabbit IgG at 1/20000 dilution Predicted band size: 50-70 kD Observed band size: 53 kD



Paraformaldehyde-fixed, paraffin embedded (rat cerebellum); Antigen retrieval by boiling in sodium citrate buffer (pH6.0) for 15min; Block endogenous peroxidase by 3% hydrogen peroxide for 20 minutes; Blocking buffer (normal goat serum) at 37°C for 30min; Antibody incubation with (phospho-Tau (Ser356)) Polyclonal Antibody, Unconjugated (bs-5421R) at 1:200 overnight at 4°C, followed by operating according to SP Kit(Rabbit) (sp-0023) instructions and DAB staining.



Paraformaldehyde-fixed, paraffin embedded (mouse cerebellum); Antigen retrieval by boiling in sodium citrate buffer (pH6.0) for 15min; Block endogenous peroxidase by 3% hydrogen peroxide for 20 minutes; Blocking buffer (normal goat serum) at 37°C for 30min; Antibody incubation with (phospho-Tau (Ser356)) Polyclonal Antibody, Unconjugated (bs-5421R) at 1:200 overnight at 4°C, followed by operating according to SP Kit(Rabbit) (sp-0023) instructions and DAB staining.