

**bs-4111R****[ Primary Antibody ]****G3BP1 Rabbit pAb****Bioss**  
ANTIBODIES

www.bioss.com.cn

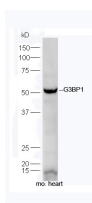
sales@bioss.com.cn

techsupport@bioss.com.cn

400-901-9800

**— DATASHEET —**

<b>Host:</b> Rabbit	<b>Isotype:</b> IgG	<b>Applications:</b> WB (1:500-2000)
<b>Clonality:</b> Polyclonal		<b>Reactivity:</b> Mouse (predicted: Human, Rat, Pig, Cow, Dog)
<b>GeneID:</b> 10146	<b>SWISS:</b> Q13283	
<b>Target:</b> G3BP1		<b>Predicted MW.:</b> 51 kDa
<b>Immunogen:</b> KLH conjugated synthetic peptide derived from human G3BP1: 361-466/466.		<b>Subcellular Location:</b> Cell membrane ,Cytoplasm ,Nucleus
<b>Purification:</b> affinity purified by Protein A		
<b>Concentration:</b> 1mg/ml		
<b>Storage:</b> 0.01M TBS (pH7.4) with 1% BSA, 0.02% Proclin300 and 50% Glycerol. Shipped at 4°C. Store at -20°C for one year. Avoid repeated freeze/thaw cycles.		
<b>Background:</b> This gene encodes one of the DNA-unwinding enzymes which prefers partially unwound 3'-tailed substrates and can also unwind partial RNA/DNA and RNA/RNA duplexes in an ATP-dependent fashion. This enzyme is a member of the heterogeneous nuclear RNA-binding proteins and is also an element of the Ras signal transduction pathway. It binds specifically to the Ras-GTPase-activating protein by associating with its SH3 domain. Several alternatively spliced transcript variants of this gene have been described, but the full-length nature of some of these variants has not been determined. [provided by RefSeq].		

**— VALIDATION IMAGES —**

Sample: Heart (Mouse) Lysate at 40 ug Primary:  
Anti-G3BP1 (bs-4111R) at 1/300 dilution  
Secondary: HRP conjugated Goat-Anti-rabbit IgG  
(bs-0295G-HRP) at 1/5000 dilution Predicted  
band size: 51 kD Observed band size: 51 kD