

bs-1359R**[Primary Antibody]****DNA PKcs Rabbit pAb****BioSS**
ANTIBODIES

www.bioss.com.cn

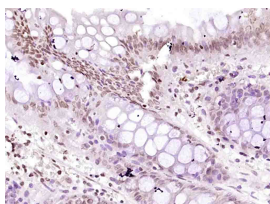
sales@bioss.com.cn

techsupport@bioss.com.cn

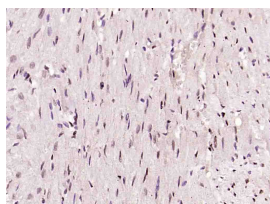
400-901-9800

— DATASHEET —

Host: Rabbit	Isotype: IgG	Applications: IHC-P (1:100-500) IHC-F (1:100-500) IF (1:100-500)
Clonality: Polyclonal		
GeneID: 5591	SWISS: P78527	
Target: DNA PKcs		Reactivity: Human, Rat (predicted: Mouse, Rabbit, Cow, Chicken, Dog, Horse)
Immunogen: KLH conjugated synthetic peptide derived from human DNA PKcs: 151-300/4128.		
Purification: affinity purified by Protein A		Predicted MW.: 454 kDa
Concentration: 1mg/ml		Subcellular Location: Nucleus
Storage: 0.01M TBS (pH7.4) with 1% BSA, 0.02% Proclin300 and 50% Glycerol. Shipped at 4°C. Store at -20°C for one year. Avoid repeated freeze/thaw cycles.		
Background: This gene encodes the catalytic subunit of the DNA-dependent protein kinase (DNA-PK). It functions with the Ku70/Ku80 heterodimer protein in DNA double strand break repair and recombination. The protein encoded is a member of the PI3/PI4-kinase family.[provided by RefSeq, Jul 2010]		

— VALIDATION IMAGES —

Paraformaldehyde-fixed, paraffin embedded (human colon); Antigen retrieval by boiling in sodium citrate buffer (pH6.0) for 15min; Block endogenous peroxidase by 3% hydrogen peroxide for 20 minutes; Blocking buffer (normal goat serum) at 37°C for 30min; Antibody incubation with (DNA PKcs) Polyclonal Antibody, Unconjugated (bs-1359R) at 1:200 overnight at 4°C, followed by operating according to SP Kit(Rabbit) (sp-0023) instructions and DAB staining.



Paraformaldehyde-fixed, paraffin embedded (rat heart); Antigen retrieval by boiling in sodium citrate buffer (pH6.0) for 15min; Block endogenous peroxidase by 3% hydrogen peroxide for 20 minutes; Blocking buffer (normal goat serum) at 37°C for 30min; Antibody incubation with (DNA PKcs) Polyclonal Antibody, Unconjugated (bs-1359R) at 1:200 overnight at 4°C, followed by operating according to SP Kit(Rabbit) (sp-0023) instructions and DAB staining.