

bs-0963R**[Primary Antibody]****BioSS**
ANTIBODIES

www.bioss.com.cn

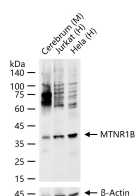
sales@bioss.com.cn

techsupport@bioss.com.cn

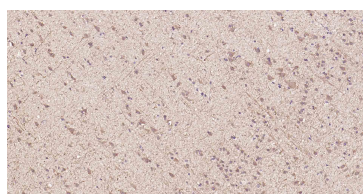
400-901-9800

MTNR1B Rabbit pAb**— DATASHEET —**

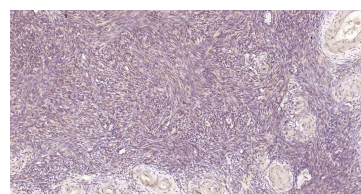
Host: Rabbit	Isotype: IgG	Applications: WB (1:500-2000)
Clonality: Polyclonal		IHC-P (1:100-500)
GeneID: 4544	SWISS: P49286	IHC-F (1:100-500)
Target: MTNR1B		IF (1:100-500)
Immunogen: KLH conjugated synthetic peptide derived from human MTNR1B: 201-300/362. < Cytoplasmic >		Reactivity: Human, Mouse
Purification: affinity purified by Protein A		
Concentration: 1mg/ml		Predicted MW.: 40 kDa
Storage: 0.01M TBS (pH7.4) with 1% BSA, 0.02% Proclin300 and 50% Glycerol. Shipped at 4°C. Store at -20°C for one year. Avoid repeated freeze/thaw cycles.		Subcellular Location: Cell membrane
Background: This gene encodes one of two high affinity forms of a receptor for melatonin, the primary hormone secreted by the pineal gland. This receptor is a G-protein coupled, 7-transmembrane receptor that is responsible for melatonin effects on mammalian circadian rhythm and reproductive alterations affected by day length. The receptor is an integral membrane protein that is readily detectable and localized to two specific regions of the brain. The hypothalamic suprachiasmatic nucleus appears to be involved in circadian rhythm while the hypophyseal pars tuberalis may be responsible for the reproductive effects of melatonin.		

— VALIDATION IMAGES —

25 ug total protein per lane of various lysates (see on figure) probed with MTNR1B polyclonal antibody, unconjugated (bs-0963R) at 1:1000 dilution and 4°C overnight incubation. Followed by conjugated secondary antibody incubation at r.t. for 60 min.



Paraformaldehyde-fixed, paraffin embedded Human Cerebrum; Antigen retrieval by boiling in sodium citrate buffer (pH6.0) for 15 min; Antibody incubation with MTNR1B Polyclonal Antibody, Unconjugated (bs-0963R) at 1:200 overnight at 4°C, followed by conjugation to the SP Kit (Rabbit, SP-0023) and DAB (C-0010) staining.



Paraformaldehyde-fixed, paraffin embedded Human Ovary; Antigen retrieval by boiling in sodium citrate buffer (pH6.0) for 15 min; Antibody incubation with MTNR1B Polyclonal Antibody, Unconjugated (bs-0963R) at 1:200 overnight at 4°C, followed by conjugation to the SP Kit (Rabbit, SP-0023) and DAB (C-0010) staining.

— SELECTED CITATIONS —

- **[IF=14.6]** Xiaohui Zhang. et al. Melatonin receptor 1a alleviates sleep fragmentation-aggravated testicular injury in T2DM by suppression of TAB1/TAK1 complex through FGFR1. ACTA PHARM SIN B. 2025 May;; IF, WB ; Mouse. 10.1016/j.apsb.2025.05.018
- **[IF=14.3]** Shiyin Li. et al. Homeostatic Shrinkage of Dendritic Spines Requires Melatonin Type 3 Receptor Activation During Sleep. ADV SCI. 2024 Aug;; 2400253 WB, IHC ; Rat. 39119847
- **[IF=13.007]** Shanshan Yu. et al. Melatonin prevents experimental central serous chorioretinopathy in rats. J PINEAL RES. 2022 Apr 29 WB, IHC ; Rat. 35436360
- **[IF=10.39]** Jang, Hoon, et al. "Synergistic effect of melatonin and ghrelin in preventing cisplatin - induced ovarian

Important Note: This product as supplied is intended for research use only, not for use in human, therapeutic or diagnostic applications.

damage via regulation of FOXO3a phosphorylation and binding to the p27Kip1 promoter in primordial follicles." Journal of Pineal Research (2017). IHC ;="Mouse". 28658519

- **[IF=8.1]** Yaling Wang. et al. Melatonin targets the paraventricular thalamus to promote non-rapid eye movement sleep in C3H/HeJ mice. CURR BIOL. 2024 八月 02 IF ;Mouse. 39096908