

**bs-1448R****[ Primary Antibody ]**

**Bioss**  
ANTIBODIES

www.bioss.com.cn

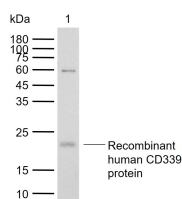
sales@bioss.com.cn

techsupport@bioss.com.cn

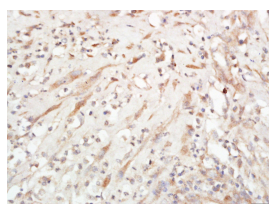
400-901-9800

**Jagged1 Rabbit pAb****— DATASHEET —**

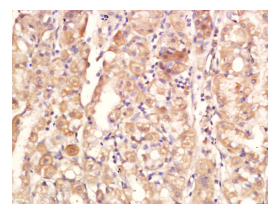
|   |                      |  |
|---|----------------------|--|
| <b>Host:</b> Rabbit   | <b>Isotype:</b> IgG  | <b>Applications:</b> <b>WB</b> (1:500-1000)<br><b>IHC-P</b> (1:100-500)<br><b>IHC-F</b> (1:100-500)<br><b>IF</b> (1:100-500)<br><b>ICC/IF</b> (1:100)<br><br><b>Reactivity:</b> Human (predicted: Mouse, Rat)<br><br><b>Predicted MW.:</b> 134 kDa<br><br><b>Subcellular Location:</b> Cell membrane |
| <b>Clonality:</b> Polyclonal  |                      |  |
| <b>GeneID:</b> 182  | <b>SWISS:</b> P78504 |  |
| <b>Target:</b> Jagged1  |                      |  |
| <b>Immunogen:</b> KLH conjugated synthetic peptide derived from human CD339: 1101-1218/1218.  |                      |  |
| <b>Purification:</b> affinity purified by Protein A   |                      |  |
| <b>Concentration:</b> 1mg/ml  |                      |  |
| <b>Storage:</b> 0.01M TBS (pH7.4) with 1% BSA, 0.02% Proclin300 and 50% Glycerol.<br>Shipped at 4°C. Store at -20°C for one year. Avoid repeated freeze/thaw cycles.  |                      |  |
| <b>Background:</b> The jagged 1 protein encoded by JAG1 is the human homolog of the Drosophila jagged protein. Human jagged 1 is the ligand for the receptor notch 1, the latter a human homolog of the Drosophila jagged receptor notch. Mutations that alter the jagged 1 protein cause Alagille syndrome. Jagged 1 signalling through notch 1 has also been shown to play a role in hematopoiesis. [provided by RefSeq]. |                      |  |

**— VALIDATION IMAGES —**

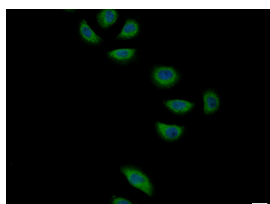
Sample: Lane 1: Recombinant human CD339 protein, N-His(bs-42225P) Primary: Anti-Jagged1 (bs-1448R) at 1/500 dilution Secondary: IRDye800CW Goat Anti-Rabbit IgG at 1/20000 dilution Predicted band size: 134 kDa Observed band size: 22 kDa



Tissue/cell: Human cervical cancer; 4% Paraformaldehyde-fixed and paraffin-embedded; Antigen retrieval: citrate buffer (0.01M, pH 6.0), Boiling bathing for 15min; Block endogenous peroxidase by 3% Hydrogen peroxide for 30min; Blocking buffer (normal goat serum, C-0005) at 37°C for 20 min; Incubation: Anti-Jagged1 Polyclonal Antibody, Unconjugated (bs-1448R) 1:500, overnight at 4°C, followed by conjugation to the secondary antibody (SP-0023) and DAB (C-0010) staining



Tissue/cell: human stomach tissue; 4% Paraformaldehyde-fixed and paraffin-embedded; Antigen retrieval: citrate buffer (0.01M, pH 6.0), Boiling bathing for 15min; Block endogenous peroxidase by 3% Hydrogen peroxide for 30min; Blocking buffer (normal goat serum, C-0005) at 37°C for 20 min; Incubation: Anti-Jagged1 Polyclonal Antibody, Unconjugated (bs-1448R) 1:500, overnight at 4°C, followed by conjugation to the secondary antibody (SP-0023) and DAB (C-0010) staining



HepG2 cell; 4% Paraformaldehyde-fixed; Triton X-100 at room temperature for 20 min; Blocking buffer (normal goat serum, C-0005) at 37°C for 20 min; Antibody incubation with (Jagged1) polyclonal Antibody, Unconjugated (bs-1448R) 1:100, 90 minutes at 37°C; followed by a conjugated Goat Anti-Rabbit IgG antibody at

Important Note: This product as supplied is intended for research use only, not for use in human, therapeutic or diagnostic applications.

37°C for 90 minutes, DAPI (blue, C02-04002) was used to stain the cell nuclei.

---

## — SELECTED CITATIONS —

- **[IF=5.6]** Wang Kun. et al. Modulating Th1/Th2 drift in asthma-related immune inflammation by enhancing bone mesenchymal stem cell homing through targeted inhibition of the Notch1/Jagged1 signaling pathway. INT IMMUNOPHARMACOL. 2024 Mar;130:111713 WB ;Rat. 38387192
- **[IF=4.8]** Qing Zhang. et al. Cancer-associated fibroblasts-induced remodeling of tumor immune microenvironment via Jagged1 in glioma. CELL SIGNAL. 2024 Mar;115:111016 WB ;Human. 38128708
- **[IF=4.5]** Ruyi Qu. et al.RBPJ Knockdown Promotes M2 Macrophage Polarization Through Mitochondrial ROS-mediated Notch1-Jagged1-Hes1 Signaling Pathway in Uveitis.INFLAMMATION.2025 Feb;48(1):133-150. IF ;Rat. 38761249
- **[IF=4.927]** Xuerui Hu. et al. The Effect of Poria cocos Polysaccharide PCP-1C on M1 Macrophage Polarization via the Notch Signaling Pathway. MOLECULES. 2023 Jan;28(5):2140 WB ;Mouse. 36903383
- **[IF=4.315]** Zhang Y et al. The Notch signaling pathway inhibitor Dapt alleviates autism-like behavior, autophagy and dendritic spine density abnormalities in a valproic acid-induced animal model of autism. Prog Neuropsychopharmacol Biol Psychiatry. 2019 May 7;94:109644. WB ;Rat. 31075347