

bs-5375R**[Primary Antibody]****phospho-GATA6 (Tyr271) Rabbit pAb****Bioss**
ANTIBODIES

www.bioss.com.cn

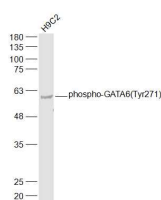
sales@bioss.com.cn

techsupport@bioss.com.cn

400-901-9800

— DATASHEET —

Host: Rabbit	Isotype: IgG	Applications: WB (1:500-2000)
Clonality: Polyclonal		
GeneID: 2627	SWISS: Q92908	
Target: phospho-GATA6 (Tyr271)		
Immunogen: KLH conjugated Synthesised phosphopeptide derived from human GATA6 around the phosphorylation site of Tyr271: GL(p-Y)SK.		
Purification: affinity purified by Protein A		Reactivity: Rat (predicted: Human, Mouse, Pig, Sheep, Cow, Dog)
Concentration: 1mg/ml		Predicted MW.: 60 kDa
Storage: 0.01M TBS (pH7.4) with 1% BSA, 0.02% Proclin300 and 50% Glycerol. Shipped at 4°C. Store at -20°C for one year. Avoid repeated freeze/thaw cycles.		Subcellular Location: Nucleus
Background: GATA-6 (GATA binding factor 6) is zinc-finger transcription factor that binds DNA at GATA regions; Involved in gene regulation specifically in the gastric epithelium. Cellular localization:Nuclear. Tissue Specificity: gastric epithelium.		

— VALIDATION IMAGES —

Sample: H9C2(Rat) Cell Lysate at 30 ug Primary:
Anti-phospho-GATA6(Tyr271) (bs-5375R) at
1/500 dilution Secondary: IRDye800CW Goat
Anti-Rabbit IgG at 1/20000 dilution Predicted
band size: 60 kD Observed band size: 60 kD