

**bs-5368R****[ Primary Antibody ]****phospho-GSK-3 Beta (Ser21) Rabbit pAb**

**BioSS**  
ANTIBODIES

www.bioss.com.cn

sales@bioss.com.cn

techsupport@bioss.com.cn

400-901-9800

**DATASHEET****Host:** Rabbit**Isotype:** IgG**Clonality:** Polyclonal**GeneID:** 2932**SWISS:** P49841**Target:** GSK-3 Beta (Ser21)**Immunogen:** KLH conjugated Synthesised phosphopeptide derived from human GSK-3 Beta around the phosphorylation site of Ser21: QP(p-S)AF.**Purification:** affinity purified by Protein A**Concentration:** 1mg/ml**Storage:** 0.01M TBS (pH7.4) with 1% BSA, 0.02% Proclin300 and 50% Glycerol.

Shipped at 4°C. Store at -20°C for one year. Avoid repeated freeze/thaw cycles.

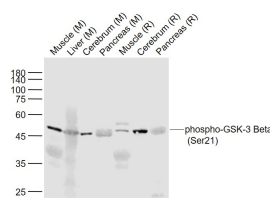
**Background:** The protein encoded by this gene is a serine-threonine kinase, belonging to the glycogen synthase kinase subfamily. It is involved in energy metabolism, neuronal cell development, and body pattern formation. Polymorphisms in this gene have been implicated in modifying risk of Parkinson disease, and studies in mice show that overexpression of this gene may be relevant to the pathogenesis of Alzheimer disease. Alternatively spliced transcript variants encoding different isoforms have been found for this gene.[provided by RefSeq, Sep 2009]

**Applications:** WB (1:500-2000)**IHC-P** (1:100-500)**IHC-F** (1:100-500)**IF** (1:100-500)**Flow-Cyt** (3µg/Test)

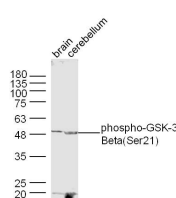
**Reactivity:** Mouse, Rat  
(predicted: Human, Pig, Sheep, Cow, Chicken, Dog, GuineaPig, Horse)

**Predicted MW.:** 47 kDa

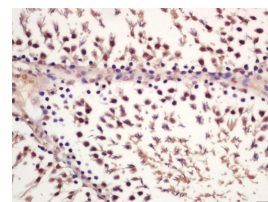
**Subcellular Location:** Cell membrane ,Cytoplasm ,Nucleus

**VALIDATION IMAGES**

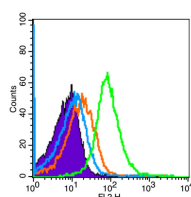
Sample: Lane 1: Muscle (Mouse) Lysate at 40 ug  
Lane 2: Liver (Mouse) Lysate at 40 ug Lane 3: Cerebrum (Mouse) Lysate at 40 ug Lane 4: Pancreas (Mouse) Lysate at 40 ug Lane 5: Muscle (Rat) Lysate at 40 ug Lane 6: Cerebrum (Rat) Lysate at 40 ug Lane 7: Pancreas (Rat) Lysate at 40 ug Primary: Anti-phospho-GSK-3 Beta (Ser21) (bs-5368R) at 1/1000 dilution Secondary: IRDye800CW Goat Anti-Rabbit IgG at 1/20000 dilution Predicted band size: 47 kD Observed band size: 47 kD



Sample: Brain (Mouse) Lysate at 40 ug Cerebellum (Mouse) Lysate at 40 ug Primary: Anti-phospho-GSK-3 Beta(Ser21) (bs-5368R) at 1/300 dilution Secondary: IRDye800CW Goat Anti-Rabbit IgG at 1/20000 dilution Predicted band size: 47 kD Observed band size: 49 kD



Tissue/cell: rat testis tissue; 4% Paraformaldehyde-fixed and paraffin-embedded; Antigen retrieval: citrate buffer (0.01M, pH 6.0 ), Boiling bathing for 15min; Block endogenous peroxidase by 3% Hydrogen peroxide for 30min; Blocking buffer (normal goat serum, C-0005) at 37°C for 20 min; Incubation: Anti-phospho-GSK-3 Beta(Ser21) Polyclonal Antibody, Unconjugated(bs-5368R) 1:200, overnight at 4°C, followed by conjugation to the secondary antibody(SP-0023) and DAB(C-0010) staining



Blank control (Black line): Mouse spleen(Black).  
Primary Antibody (green line): Rabbit Anti-GSK-3 Beta(Ser21) antibody (bs-5368R) Dilution: 3µg /10<sup>6</sup> cells; Isotype Control Antibody (orange)

**Important Note:** This product as supplied is intended for research use only, not for use in human, therapeutic or diagnostic applications.

line): Rabbit IgG . Secondary Antibody (white  
blue line): Goat anti-rabbit IgG-PE Dilution: 1µg  
/test. Protocol The cells were fixed with 4% PFA  
(10min at room temperature)and then  
permeabilized with 90% ice-cold methanol for  
20 min at room temperature. The cells were then  
incubated in 5%BSA goat serum to block non-  
specific protein-protein interactions for 15 min  
at room temperature .Cells stained with Primary  
Antibody for 30 min at room temperature. The  
secondary antibody used for 40 min at room  
temperature. Acquisition of 20,000 events was  
performed.

---

## — SELECTED CITATIONS —

---

- **[IF=14.7]** Zhou Mengze. et al. P2Y14R activation facilitates liver regeneration via CREB/DNMT3b/Dact-2/?eta-Catenin signals in acute liver failureACTA PHARM SIN B. 2025 Jan; Western blot ;Mouse. 10.1016/j.apsb.2025.01.004
- **[IF=7.129]** Yanwen Hou. et al. Prenatal PM2.5 exposure contributes to neuronal tau lesion in male offspring mice through mitochondrial dysfunction-mediated insulin resistance. ECOTOX ENVIRON SAFE. 2022 Nov;246:114151 WB ;Mouse. 36228359
- **[IF=6.656]** Mingjuan Yang. et al. Rosmarinic acid potentiates and detoxifies tacrine in combination for Alzheimer's disease. PHYTOMEDICINE. 2022 Dec;;154600 WB ;Mouse. 36610144
- **[IF=5]** Chunxiao Liu. et al. Nodakenin alleviates ovariectomy-induced osteoporosis by modulating osteoblastogenesis and osteoclastogenesis. EUR J PHARMACOL. 2023 Oct;;176121 WB ;Mouse. 37866743
- **[IF=2.666]** X Zhou et al. Modulating NMDA receptors to treat MK-801-induced schizophrenic cognition deficit: effects of clozapine combining with PQQ treatment and possible mechanisms of action. BMC Psychiatry. 2020 Mar 6;20(1):106. WB ;rat. 32143671