

**bsm-54572R****[ Primary Antibody ]****BioSS**  
ANTIBODIES

www.bioss.com.cn

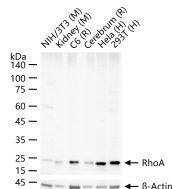
sales@bioss.com.cn

techsupport@bioss.com.cn

400-901-9800

**RhoA Recombinant Rabbit mAb****DATASHEET**

<b>Host:</b> Rabbit	<b>Isotype:</b> IgG	<b>Applications:</b> WB (1:500-2000) <b>Flow-Cyt</b> (1:50-100) <b>ICC/IF</b> (1:50-200)  <b>Reactivity:</b> Human, Mouse, Rat   <b>Predicted MW.:</b> 21 kDa  <b>Subcellular Location:</b> Cell membrane ,Cytoplasm
<b>Clonality:</b> Recombinant	<b>CloneNo.:</b> 12C6	
<b>GeneID:</b> 387	<b>SWISS:</b> P61586	
<b>Target:</b> RhoA		
<b>Purification:</b> affinity purified by Protein A		
<b>Concentration:</b> 1mg/ml		
<b>Storage:</b> 0.01M TBS (pH7.4) with 1% BSA, 0.02% Proclin300 and 50% Glycerol. Shipped at 4°C. Store at -20°C for one year. Avoid repeated freeze/thaw cycles.		
<b>Background:</b> This gene encodes a member of the Rho family of small GTPases, which cycle between inactive GDP-bound and active GTP-bound states and function as molecular switches in signal transduction cascades. Rho proteins promote reorganization of the actin cytoskeleton and regulate cell shape, attachment, and motility. The protein encoded by this gene is prenylated at its C-terminus, and localizes to the cytoplasm and plasma membrane. It is thought to be important in cell locomotion. Overexpression of this gene is associated with tumor cell proliferation and metastasis. Multiple alternatively spliced variants, encoding the same protein, have been identified.		

**VALIDATION IMAGES**

25 ug total protein per lane of various lysates (see on figure) probed with RhoA monoclonal antibody, unconjugated (bsm-54572R) at 1:1000 dilution and 4°C overnight incubation. Followed by conjugated secondary antibody incubation at r.t. for 60 min.

**SELECTED CITATIONS**

- **[IF=4.9]** Lu Tianming. et al. Cordyceps sinensis relieves non-small cell lung cancer by inhibiting the MAPK pathway. CHIN MED-UK. 2024 Dec;19(1):1-14 WB ;Mouse. 38528546