

## ZNF25 Rabbit pAb

Catalog Number: bs-24177R

Target Protein: ZNF25

Concentration: 1mg/ml

Form: Liquid

Host: Rabbit

Clonality: Polyclonal

Isotype: IgG

Applications: WB (1:500-2000)

Reactivity: Human

Predicted MW: 54 kDa

Subcellular Nucleus

Locations:

Entrez Gene: 22750

Source: KLH conjugated synthetic peptide derived from mouse ZNF25: 51-150/454.

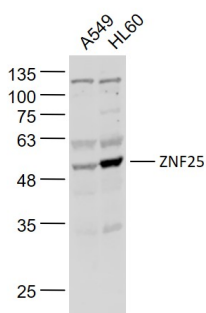
Purification: affinity purified by Protein A

Storage: 0.01M TBS (pH7.4) with 1% BSA, 0.02% Proclin300 and 50% Glycerol.

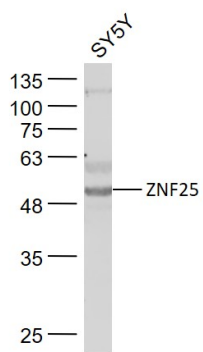
Shipped at 4°C. Store at -20°C for one year. Avoid repeated freeze/thaw cycles.

**Background:** ZNF25 (Zinc Finger Protein 25) is a Protein Coding gene. Among its related pathways are Gene Expression. GO annotations related to this gene include nucleic acid binding. An important paralog of this gene is ZNF33B.

### VALIDATION IMAGES



Sample: A549(Human) Cell Lysate at 30 ug HL60(Human) Cell Lysate at 30 ug Primary: Anti-ZNF25 (bs-24177R) at 1/1000 dilution Secondary: IRDye800CW Goat Anti-Rabbit IgG at 1/20000 dilution Predicted band size: 54 kD Observed band size: 53 kD



Sample: SY5Y(Human) Cell Lysate at 30 ug Primary: Anti-ZNF25 (bs-24177R) at 1/1000 dilution Secondary: IRDye800CW Goat Anti-Rabbit IgG at 1/20000 dilution Predicted band size: 54 kD Observed band size: 53 kD