

bs-24170R

[Primary Antibody]

SLC26A10 Rabbit pAb

Bioss
ANTIBODIES

www.bioss.com.cn

sales@bioss.com.cn

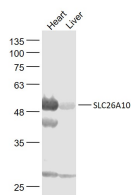
techsupport@bioss.com.cn

400-901-9800

— DATASHEET —

Host: Rabbit	Isotype: IgG	Applications: WB (1:500-2000)
Clonality: Polyclonal		Reactivity: Mouse
Target: SLC26A10		
Immunogen: KLH conjugated synthetic peptide derived from mouse SLC26A10: 321-420/563.		Predicted MW.: 53 kDa
Purification: affinity purified by Protein A		Subcellular Location: Cell membrane
Concentration: 1mg/ml		
Storage: 0.01M TBS (pH7.4) with 1% BSA, 0.02% Proclin300 and 50% Glycerol. Shipped at 4°C. Store at -20°C for one year. Avoid repeated freeze/thaw cycles.		
Background: SLC26A10 (Solute Carrier Family 26 Member 10) is a Protein Coding gene. GO annotations related to this gene include antiporter activity and sulfate transmembrane transporter activity. An important paralog of this gene is SLC26A7.		

— VALIDATION IMAGES —



Sample: Heart (Mouse) Lysate at 40 ug Liver (Mouse) Lysate at 40 ug Primary: Anti-SLC26A10 (bs-24170R) at 1/1000 dilution Secondary: IRDye800CW Goat Anti-Rabbit IgG at 1/20000 dilution Predicted band size: 53 kD Observed band size: 53 kD