

bs-5322R**[Primary Antibody]****phospho-EGFR (Ser1042) Rabbit pAb****BioSS**
ANTIBODIES

www.bioss.com.cn

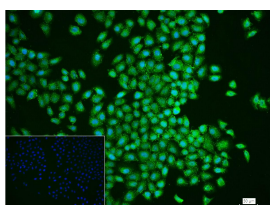
sales@bioss.com.cn

techsupport@bioss.com.cn

400-901-9800

— DATASHEET —

Host: Rabbit	Isotype: IgG	Applications: IHC-P (1:100-500) IHC-F (1:100-500) IF (1:100-500) ICC/IF (1:50-1:200) Reactivity: Human (predicted: Mouse, Chicken, Horse) Predicted MW.: 170 kDa Subcellular Location: Secreted ,Cell membrane ,Cytoplasm ,Nucleus
Clonality: Polyclonal		
GeneID: 1956	SWISS: P00533	
Target: EGFR (Ser1042)		
Immunogen: KLH conjugated Synthesised phosphopeptide derived from human EGFR around the phosphorylation site of Ser1142: AT(p-S)NN.		
Purification: affinity purified by Protein A		
Concentration: 1mg/ml		
Storage: 0.01M TBS (pH7.4) with 1% BSA, 0.02% Proclin300 and 50% Glycerol. Shipped at 4°C. Store at -20°C for one year. Avoid repeated freeze/thaw cycles.		
Background: The protein encoded by this gene is a transmembrane glycoprotein that is a member of the protein kinase superfamily. This protein is a receptor for members of the epidermal growth factor family. EGFR is a cell surface protein that binds to epidermal growth factor. Binding of the protein to a ligand induces receptor dimerization and tyrosine autophosphorylation and leads to cell proliferation. Mutations in this gene are associated with lung cancer. Multiple alternatively spliced transcript variants that encode different protein isoforms have been found for this gene. [provided by RefSeq, Jul 2010]		

— VALIDATION IMAGES —

4% Paraformaldehyde-fixed Hela (H) (treated with hEGF(100ng/ml, 15 min)) cell; Triton X-100 at r.t. for 20 min; Antibody incubation with (phospho-EGFR (Ser1142)) polyclonal Antibody, unconjugated (bs-5322R) 1:100, 90 min at 37°C; followed by conjugated Goat Anti-Rabbit IgG antibody (green, bs-40295G-FITC) at 37°C for 90 min, DAPI (blue, C02-04002) was used to stain the cell nuclei. PBS instead of the primary antibody was used as the blank control.