

bs-5304R**[Primary Antibody]****phospho-Separase (Ser1073) Rabbit pAb****Bioss**
ANTIBODIES

www.bioss.com.cn

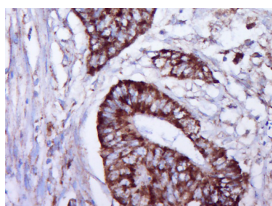
sales@bioss.com.cn

techsupport@bioss.com.cn

400-901-9800

— DATASHEET —

Host: Rabbit	Isotype: IgG	Applications: IHC-P (1:100-500) IHC-F (1:100-500) IF (1:100-500) Reactivity: Human Predicted MW.: 198 kDa Subcellular Location: Cytoplasm ,Nucleus
Clonality: Polyclonal		
GeneID: 9700	SWISS: Q14674	
Target: phospho-Separase (Ser1073)		
Immunogen: KLH conjugated Synthesised phosphopeptide derived from human ESPL1 around the phosphorylation site of Ser1073: LD(p-S)VK.		
Purification: affinity purified by Protein A		
Concentration: 1mg/ml		
Storage: 0.01M TBS (pH7.4) with 1% BSA, 0.02% Proclin300 and 50% Glycerol. Shipped at 4°C. Store at -20°C for one year. Avoid repeated freeze/thaw cycles.		
Background: Separase is a cysteine protease that is essential for mitotic progression by separating sister chromatids. Each cell must receive one chromatid of every chromosome, during mitosis. Cohesin plays an important role in cohering sister chromatids during the prophase through anaphase stages of mitosis, making certain that genomic information is replicated accurately. As the cellular division process continues, separase destroys cohesin by means of cleavage, allowing the chromatids to separate and divide with the cell. Separase activity is highly regulated. It not only cleaves cohesin at the onset of anaphase but also cleaves itself, promoting downregulation of separase after anaphase. Should a human cell become an aneuploid (one too many or too few chromatids), the embryo most likely will not survive. Should the embryo survive, it will most likely develop severe birth defects or later develop malignant cancers.		

— VALIDATION IMAGES —

Paraformaldehyde-fixed, paraffin embedded (Human cervical cancer); Antigen retrieval by boiling in sodium citrate buffer (pH6.0) for 15min; Block endogenous peroxidase by 3% hydrogen peroxide for 20 minutes; Blocking buffer (normal goat serum) at 37°C for 30min; Antibody incubation with (p-Separase (Ser1073)) Polyclonal Antibody, Unconjugated (bs-5304R) at 1:400 overnight at 4°C, followed by operating according to SP Kit(Rabbit) (sp-0023) instructions and DAB staining.