

**bs-24137R****[ Primary Antibody ]****SGOL2 Rabbit pAb****Bioss**  
**ANTIBODIES**

www.bioss.com.cn

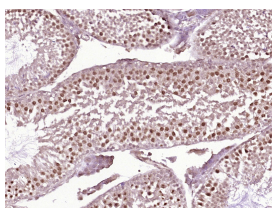
sales@bioss.com.cn

techsupport@bioss.com.cn

400-901-9800

**— DATASHEET —**

<b>Host:</b> Rabbit	<b>Isotype:</b> IgG	<b>Applications:</b> <b>IHC-P</b> (1:100-500) <b>IHC-F</b> (1:100-500) <b>IF</b> (1:100-500)
<b>Clonality:</b> Polyclonal		<b>Reactivity:</b> Mouse
<b>Target:</b> SGOL2		
<b>Immunogen:</b> KLH conjugated synthetic peptide derived from mouse SGOL2: 401-500/1265.		<b>Predicted MW.:</b> 145 kDa
<b>Purification:</b> affinity purified by Protein A		<b>Subcellular Location:</b> Nucleus
<b>Concentration:</b> 1mg/ml		
<b>Storage:</b> 0.01M TBS (pH7.4) with 1% BSA, 0.02% Proclin300 and 50% Glycerol. Shipped at 4°C. Store at -20°C for one year. Avoid repeated freeze/thaw cycles.		
<b>Background:</b> SGO2 (Shugoshin 2) is a Protein Coding gene. Diseases associated with SGO2 include Perrault Syndrome. Among its related pathways are Mitotic Metaphase and Anaphase and Signaling by GPCR.		

**— VALIDATION IMAGES —**

Paraformaldehyde-fixed, paraffin embedded (Mouse testis); Antigen retrieval by boiling in sodium citrate buffer (pH6.0) for 15min; Block endogenous peroxidase by 3% hydrogen peroxide for 20 minutes; Blocking buffer (normal goat serum) at 37°C for 30min; Antibody incubation with (SGOL2) Polyclonal Antibody, Unconjugated (bs-24137R) at 1:400 overnight at 4°C, followed by operating according to SP Kit(Rabbit) (sp-0023) instructions and DAB staining.

**— SELECTED CITATIONS —**

- **[IF=3.3]** Yinghua Chen. et al. SGO2 as a Prognostic Biomarker Correlated with Cell Proliferation, Migration, Invasion, and Epithelial-Mesenchymal Transition in Lung Adenocarcinoma. FRONT BIOSCI-LANDMRK. 2024 Aug;29(9):314 WB ;Human. 10.31083/j.fbl2909314