

bs-6600R

[Primary Antibody]

HMPH Rabbit pAb

Bioss
ANTIBODIES

www.bioss.com.cn

sales@bioss.com.cn

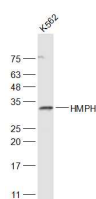
techsupport@bioss.com.cn

400-901-9800

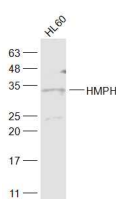
— DATASHEET —

Host: Rabbit	Isotype: IgG	Applications: WB (1:500-2000)
Clonality: Polyclonal		
GeneID: 3087	SWISS: Q03014	
Target: HMPH		
Immunogen: KLH conjugated synthetic peptide derived from human HHEX/HMPH: 131-230/270.		
Purification: affinity purified by Protein A		Reactivity: Human (predicted: Mouse, Rat, Rabbit, Pig, Cow, Dog, Horse)
Concentration: 1mg/ml		Predicted MW.: 30 kDa
Storage: 0.01M TBS (pH7.4) with 1% BSA, 0.02% Proclin300 and 50% Glycerol. Shipped at 4°C. Store at -20°C for one year. Avoid repeated freeze/thaw cycles.		Subcellular Location: Nucleus
Background: Recognizes the DNA sequence 5'-ATTAA-3'. Transcriptional repressor. May play a role in hematopoietic differentiation. Establishes anterior identity at two levels; acts early to enhance canonical WNT-signaling by repressing expression of TLE4, and acts later to inhibit NODAL-signaling by directly targeting NODAL.		

— VALIDATION IMAGES —



Sample: K562(Human) Cell Lysate at 30 ug
Primary: Anti-HMPH (bs-6600R) at 1/1000
dilution Secondary: IRDye800CW Goat Anti-Rabbit IgG at 1/20000 dilution Predicted band size: 30 kD Observed band size: 30 kD



Sample: HL60(Human) Cell Lysate at 30 ug
Primary: Anti-HMPH (bs-6600R) at 1/1000
dilution Secondary: IRDye800CW Goat Anti-Rabbit IgG at 1/20000 dilution Predicted band size: 30 kD Observed band size: 30 kD