

bs-23465R

[Primary Antibody]

CD3D Rabbit pAb

Bioss
ANTIBODIES

www.bioss.com.cn

sales@bioss.com.cn

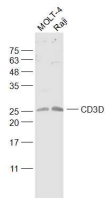
techsupport@bioss.com.cn

400-901-9800

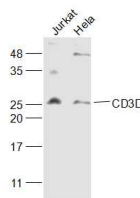
— DATASHEET —

Host: Rabbit	Isotype: IgG	Applications: WB (1:500-2000) Reactivity: Human Predicted MW.: 19 kDa Subcellular Location: Cell membrane
Clonality: Polyclonal		
GeneID: 915	SWISS: P04234	
Target: CD3D		
Immunogen: KLH conjugated synthetic peptide derived from human CD3D: 31-120/171.		
Purification: affinity purified by Protein A		
Concentration: 1mg/ml		
Storage: 0.01M TBS (pH7.4) with 1% BSA, 0.02% Proclin300 and 50% Glycerol. Shipped at 4°C. Store at -20°C for one year. Avoid repeated freeze/thaw cycles.		
Background: CD3D (CD3d Molecule) is a Protein Coding gene. Diseases associated with CD3D include Immunodeficiency 19 and T-B+ Severe Combined Immunodeficiency Due To Cd3delta/Cd3epsilon/Cd3zeta. Among its related pathways are ICos-ICosL Pathway in T-Helper Cell and CTLA4 Signaling. GO annotations related to this gene include protein heterodimerization activity and transmembrane signaling receptor activity. An important paralog of this gene is CD3G.		

— VALIDATION IMAGES —



Sample: MOLT-4(Human) Cell Lysate at 30 ug
Raji(Human) Cell Lysate at 30 ug Primary: Anti-CD3D (bs-23465R) at 1/1000 dilution Secondary: IRDye800CW Goat Anti-Rabbit IgG at 1/20000 dilution Predicted band size: 19 kD Observed band size: 25 kD



Sample: Jurkat(Human) Cell Lysate at 30 ug
HeLa(Human) Cell Lysate at 30 ug Primary: Anti-CD3D (bs-23465R) at 1/1000 dilution Secondary: IRDye800CW Goat Anti-Rabbit IgG at 1/20000 dilution Predicted band size: 19 kD Observed band size: 27 kD