

bs-5337R**[Primary Antibody]****phospho-EIF4EBP1 (Ser111) Rabbit pAb****BioSS**
ANTIBODIES

www.bioss.com.cn

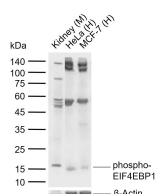
sales@bioss.com.cn

techsupport@bioss.com.cn

400-901-9800

— DATASHEET —

Host: Rabbit	Isotype: IgG	Applications: WB (1:500-2000)
Clonality: Polyclonal		
GeneID: 1978	SWISS: Q13541	
Target: phospho-EIF4EBP1 (Ser111)		
Immunogen: KLH conjugated Synthesised phosphopeptide derived from human 4EBP1 around the phosphorylation site of Ser111: EE(p-S)QF.		
Purification: affinity purified by Protein A		Reactivity: Human, Mouse (predicted: Rat, Cow, Dog, Horse)
Concentration: 1mg/ml		
Storage: 0.01M TBS (pH7.4) with 1% BSA, 0.02% Proclin300 and 50% Glycerol. Shipped at 4°C. Store at -20°C for one year. Avoid repeated freeze/thaw cycles.		
Background: This gene encodes one member of a family of translation repressor proteins. The protein directly interacts with eukaryotic translation initiation factor 4E (eIF4E), which is a limiting component of the multisubunit complex that recruits 40S ribosomal subunits to the 5' end of mRNAs. Interaction of this protein with eIF4E inhibits complex assembly and represses translation. This protein is phosphorylated in response to various signals including UV irradiation and insulin signaling, resulting in its dissociation from eIF4E and activation of mRNA translation. [provided by RefSeq, Jul 2008].		
		Predicted MW.: 13 kDa
		Subcellular Location: Cytoplasm ,Nucleus

— VALIDATION IMAGES —

Sample: Lane 1: Mouse Kidney tissue lysates
Lane 2: Human HeLa cell lysates Lane 3: Human
MCF-7 cell lysates Primary: Anti-phospho-
EIF4EBP1 (Ser111) (bs-5337R) at 1/1000 dilution
Secondary: IRDye800CW Goat Anti-Rabbit IgG at
1/20000 dilution Predicted band size: 13 kDa
Observed band size: 16 kDa