

bs-4150R**[Primary Antibody]****Kv2.1 Rabbit pAb****Bioss**
ANTIBODIES

www.bioss.com.cn

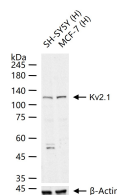
sales@bioss.com.cn

techsupport@bioss.com.cn

400-901-9800

— DATASHEET —

Host: Rabbit Clonality: Polyclonal GeneID: 3745 Target: Kv2.1 Immunogen: KLH conjugated synthetic peptide derived from human DRK1: 465-570/858. Purification: affinity purified by Protein A Concentration: 1mg/ml Storage: 0.01M TBS (pH7.4) with 1% BSA, 0.02% Proclin300 and 50% Glycerol. Shipped at 4°C. Store at -20°C for one year. Avoid repeated freeze/thaw cycles. Background: Mediates the voltage-dependent potassium ion permeability of excitable membranes. Channels open or close in response to the voltage difference across the membrane, letting potassium ions pass in accordance with their electrochemical gradient.	Isotype: IgG SWISS: Q14721	Applications: WB (1:500-2000) Reactivity: Human (predicted: Mouse, Rat, Rabbit, Pig, Chicken, Dog, Horse) Predicted MW.: 96 kDa Subcellular Location: Cell membrane
--	---	--

— VALIDATION IMAGES —

25 ug total protein per lane of various lysates (see on figure) probed with Kv2.1 polyclonal antibody, unconjugated (bs-4150R) at 1:1000 dilution and 4°C overnight incubation. Followed by conjugated secondary antibody incubation at r.t. for 60 min.

— SELECTED CITATIONS —

- **[IF=3.8]** Pucca, Manuela Berto, et al. "Immunosuppressive evidence of Tityus serrulatus toxins Ts6 and Ts15: insights of a novel K⁺ channel pattern in T cells." Immunology (2015). Other ;Mouse. 26595158