

bs-3850R

[Primary Antibody]

BCMA Rabbit pAb

Bioss
ANTIBODIES

www.bioss.com.cn

sales@bioss.com.cn

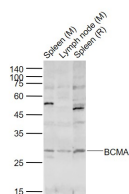
techsupport@bioss.com.cn

400-901-9800

— DATASHEET —

Host: Rabbit	Isotype: IgG	Applications: WB (1:500-2000)
Clonality: Polyclonal		Reactivity: Mouse, Rat
Target: BCMA		
Immunogen: KLH conjugated synthetic peptide derived from mouse BCMA: 12-110/184. < Extracellular >		Predicted MW.: 20 kDa
Purification: affinity purified by Protein A		Subcellular Location: Cell membrane
Concentration: 1mg/ml		
Storage: 0.01M TBS (pH7.4) with 1% BSA, 0.02% Proclin300 and 50% Glycerol. Shipped at 4°C. Store at -20°C for one year. Avoid repeated freeze/thaw cycles.		
Background: The protein encoded by this gene is a member of the TNF-receptor superfamily. This receptor is preferentially expressed in mature B lymphocytes, and may be important for B cell development and autoimmune response. This receptor has been shown to specifically bind to the tumor necrosis factor (ligand) superfamily, member 13b (TNFSF13B/TALL-1/BAFF), and to lead to NF-kappaB and MAPK8/JNK activation. This receptor also binds to various TRAF family members, and thus may transduce signals for cell survival and proliferation. [provided by RefSeq].		

— VALIDATION IMAGES —



Sample: Lane 1: Spleen (Mouse) Lysate at 40 ug

Lane 2: Lymph node (Mouse) Lysate at 40 ug

Lane 3: Spleen (Rat) Lysate at 40 ug Primary:

Anti-BCMA (bs-3850R) at 1/1000 dilution

Secondary: IRDye800CW Goat Anti-Rabbit IgG at

1/20000 dilution Predicted band size: 25 kD

Observed band size: 27 kD

— SELECTED CITATIONS —

- **[IF=5.5]** Ma Chi. et al. Upregulated Selenoprotein I during LPS-induced B cell activation promotes lipidomic changes and is required for effective differentiation into IgM secreting plasma B cells. J LEUKOCYTE BIOL. 2024 Jan;; FCM ;Mouse. 38289835