

bs-4145R**[Primary Antibody]****SYTL5 Rabbit pAb****Bioss**
ANTIBODIES

www.bioss.com.cn

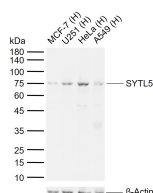
sales@bioss.com.cn

techsupport@bioss.com.cn

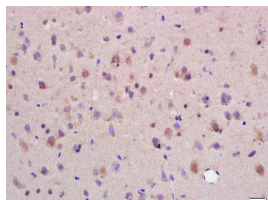
400-901-9800

DATASHEET

Host: Rabbit	Isotype: IgG	Applications: WB (1:500-2000) IHC-P (1:100-500) IHC-F (1:100-500) IF (1:100-500) Reactivity: Human, Rat (predicted: Mouse, Rabbit, Pig, Cow, Dog, Horse) Predicted MW.: 81 kDa Subcellular Location: Cell membrane
Clonality: Polyclonal		
GeneID: 94122	SWISS: Q8TDW5	
Target: SYTL5		
Immunogen: KLH conjugated synthetic peptide derived from human SYTL5: 601-700/730.		
Purification: affinity purified by Protein A		
Concentration: 1mg/ml		
Storage: 0.01M TBS (pH7.4) with 1% BSA, 0.02% Proclin300 and 50% Glycerol. Shipped at 4°C. Store at -20°C for one year. Avoid repeated freeze/thaw cycles.		
Background: The protein encoded by this gene belongs to the synaptotagmin- like (Slp) protein family, which contains a unique homology domain at the N-terminus, referred to as the Slp homology domain (SHD). The SHD functions as a binding site for Rab27A, which plays a role in protein transport. Expression of this gene is restricted to placenta and liver, suggesting that it might be involved in Rab27A- dependent membrane trafficking in specific tissues. Alternatively spliced transcript variants encoding different isoforms have been found for this gene.		

VALIDATION IMAGES

Sample: Lane 1: Human MCF-7 cell lysates Lane
2: Human U251 cell lysates Lane 3: Human HeLa
cell lysates Lane 4: Human A549 cell lysates
Primary: Anti-SYTL5 (bs-4145R) at 1/1000
dilution Secondary: IRDye800CW Goat Anti-
Rabbit IgG at 1/20000 dilution Predicted band
size: 81 kDa Observed band size: 75 kDa



Tissue/cell: rat brain tissue;4%
Paraformaldehyde-fixed and paraffin-
embedded; Antigen retrieval: citrate buffer (0.01M, pH 6.0), Boiling bathing for 15min;
Blocking buffer (normal goat serum,C-0005) at
37°C for 20 min; Incubation: Anti-SYTL5
Polyclonal Antibody, Unconjugated(bs-4145R)
1:200, overnight at 4°C; The secondary antibody
was Goat Anti-Rabbit IgG, Cy3
conjugated(bs-0295G-Cy3)used at 1:200 dilution
for 40 minutes at 37°C. DAPI(5ug/ml,blue,C-0033)
was used to stain the cell nuclei