

**bs-23491R****[ Primary Antibody ]****CD1d Rabbit pAb**

**Bioss**  
ANTIBODIES

www.bioss.com.cn

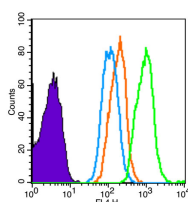
sales@bioss.com.cn

techsupport@bioss.com.cn

400-901-9800

**— DATASHEET —**

|  |   |   |
|--|---|---|
| <b>Host:</b> Rabbit<br><b>Clonality:</b> Polyclonal<br><b>GeneID:</b> 912<br><b>Target:</b> CD1d<br><b>Immunogen:</b> KLH conjugated synthetic peptide derived from human CD1d : 101-200/335. < Extracellular ><br><b>Purification:</b> affinity purified by Protein A<br><b>Concentration:</b> 1mg/ml<br><b>Storage:</b> 0.01M TBS (pH7.4) with 1% BSA, 0.02% Proclin300 and 50% Glycerol.<br>Shipped at 4°C. Store at -20°C for one year. Avoid repeated freeze/thaw cycles.<br><b>Background:</b> This gene encodes a divergent member of the CD1 family of transmembrane glycoproteins, which are structurally related to the major histocompatibility complex (MHC) proteins and form heterodimers with beta-2-microglobulin. The CD1 proteins mediate the presentation of primarily lipid and glycolipid antigens of self or microbial origin to T cells. The human genome contains five CD1 family genes organized in a cluster on chromosome 1. The CD1 family members are thought to differ in their cellular localization and specificity for particular lipid ligands. The protein encoded by this gene localizes to late endosomes and lysosomes via a tyrosine-based motif in the cytoplasmic tail. Two transcript variants encoding different isoforms have been found for this gene. [provided by RefSeq, Jan 2016] | <b>Isotype:</b> IgG<br><b>SWISS:</b> P15813 | <b>Applications:</b> Flow-Cyt (1ug/Test)<br><b>Reactivity:</b> Human<br><br><b>Predicted MW.:</b> 36 kDa<br><b>Subcellular Location:</b> Extracellular matrix ,Cell membrane ,Cytoplasm |
|--|---|---|

**— VALIDATION IMAGES —**

Blank control (Black line): Molt-4 (Black).

Primary Antibody (green line): Rabbit Anti-CD1D antibody (bs-23491R) Dilution: 1µg/10<sup>6</sup> cells;  
 Isotype Control Antibody (orange line): Rabbit IgG . Secondary Antibody (white blue line): Goat anti-rabbit IgG-AF647 Dilution: 1µg/test.

Protocol The cells were fixed with 4% PFA (10min at room temperature) and then permeabilized with PBST for 20 min at room temperature. The cells were then incubated in 5% BSA to block non-specific protein-protein interactions for 30 min at room temperature .Cells stained with Primary Antibody for 30 min at room temperature. The secondary antibody used for 40 min at room temperature.

Acquisition of 20,000 events was performed.