

bs-10470R**[Primary Antibody]****DYNC1I1 Rabbit pAb****Bioss**
ANTIBODIES

www.bioss.com.cn

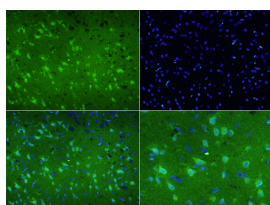
sales@bioss.com.cn

techsupport@bioss.com.cn

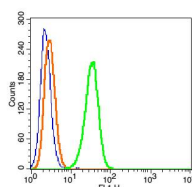
400-901-9800

— DATASHEET —

Host: Rabbit	Isotype: IgG	Applications: IHC-P (1:100-500) IHC-F (1:100-500) IF (1:100-500) Flow-Cyt (1µg/Test)
Clonality: Polyclonal		
GeneID: 27019	SWISS: Q9UI46	
Target: DYNC1I1		
Immunogen: KLH conjugated synthetic peptide derived from human DYNC1I1: 1-100/645.		Reactivity: Human, Rat (predicted: Mouse, Rabbit, Pig, Sheep, Cow, Chicken, Horse)
Purification: affinity purified by Protein A		
Concentration: 1mg/ml		Predicted MW.: 71 kDa
Storage: 0.01M TBS (pH7.4) with 1% BSA, 0.02% Proclin300 and 50% Glycerol. Shipped at 4°C. Store at -20°C for one year. Avoid repeated freeze/thaw cycles.		Subcellular Location: Cytoplasm
Background: The inner- and outer-arm dyneins, which bridge between the doublet microtubules in axonemes, are the force-generating proteins responsible for the sliding movement in axonemes. The intermediate and light chains, thought to form the base of the dynein arm, help mediate attachment and may also participate in regulating dynein activity. This gene encodes an intermediate chain dynein, belonging to the large family of motor proteins. Mutations in this gene result in abnormal ciliary ultrastructure and function associated with primary ciliary dyskinesia (PCD) and Kartagener syndrome. [provided by RefSeq, Jul 2008].		

— VALIDATION IMAGES —

Tissue/cell: rat brain tissue;4% Paraformaldehyde-fixed and paraffin-embedded; Antigen retrieval: citrate buffer (0.01M, pH 6.0), Boiling bathing for 15min; Blocking buffer (normal goat serum, C-0005) at 37°C for 20 min; Incubation: Anti-DYNC1I1 Polyclonal Antibody, FITC conjugated(bs-10470R-FITC) 1:200, 60 minutes at 37°C. DAPI(5µg/ml, blue, C-0033) was used to stain the cell nuclei



Blank control(blue): HeLa(fixed with 2% paraformaldehyde (10 min) and then permeabilized with ice-cold 90% methanol for 30 min on ice). Primary Antibody: Rabbit Anti-DYNC1I1/FITC Conjugated antibody (bs-10470R /FITC), Dilution: 1µg in 100 µL 1X PBS containing 0.5% BSA; Isotype Control Antibody: Rabbit IgG/FITC(orange), used under the same conditions.