

**bs-3778R****[ Primary Antibody ]****CTCF Rabbit pAb****Bioss**  
**ANTIBODIES**

www.bioss.com.cn

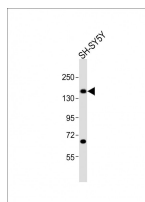
sales@bioss.com.cn

techsupport@bioss.com.cn

400-901-9800

**— DATASHEET —**

<b>Host:</b> Rabbit	<b>Isotype:</b> IgG	<b>Applications:</b> WB (1:500-2000)
<b>Clonality:</b> Polyclonal		<b>Reactivity:</b> Human (predicted: Mouse, Rat, Pig, Cow, Dog, Horse)
<b>GeneID:</b> 10664	<b>SWISS:</b> P49711	
<b>Target:</b> CTCF		<b>Predicted MW.:</b> 83 kDa
<b>Immunogen:</b> KLH conjugated synthetic peptide derived from human CTCF: 151-250/727.		<b>Subcellular Location:</b> Nucleus
<b>Purification:</b> affinity purified by Protein A		
<b>Concentration:</b> 1mg/ml		
<b>Storage:</b> 0.01M TBS (pH7.4) with 1% BSA, 0.02% Proclin300 and 50% Glycerol. Shipped at 4°C. Store at -20°C for one year. Avoid repeated freeze/thaw cycles.		
<b>Background:</b> CTCF (CCCTC-binding factor) is a highly conserved zinc finger protein that has been implicated in playing a role in a wide range of regulatory functions, including transcriptional activation/repression, insulation, imprinting, and X chromosome inactivation. A general role for CTCF in the global organisation of chromatin architecture has been proposed. It has been suggested that CTCF is involved, in a heritable manner, in the interplay between DNA methylation, higher-order chromatin structure, and lineage-specific gene expression.		

**— VALIDATION IMAGES —**

Anti-CTCF Antibody (N-Term) at 1:2000 dilution +  
SH-SY5Y whole cell lysates Lysates/proteins at  
20 µg per lane. Secondary Goat Anti-Rabbit IgG,  
(H+L), Peroxidase conjugated at 1/10000 dilution  
Predicted band size : 83 kDa Blocking/Dilution  
buffer: 5% NFDM/TBST.